

ARLINGTON ACRES — SECTION FOUR

CERTIFICATE OF SURVEY

1. The subdivided property (city) (and the above plat) is true and correct and represents a part of the subdivision quarter and a part of the southeast quarter of Section 16, Township 36 North of Range 9 East in Madison County, Indiana, being more particularly described as follows, to-wit:

That the subdivided property (city) (and the above plat) is true and correct and represents a part of the subdivision quarter and a part of the southeast quarter of Section 16, Township 36 North of Range 9 East in Madison County, Indiana, being more particularly described as follows, to-wit:

The subdivision of Section 16, Township 36 North of Range 9 East in Madison County, Indiana, into 360 lots, each of 1/4 acre, was approved by the Board of Commissioners of Madison County, Indiana, on the 15th day of January, 1976.

The size of lots and volume of streets and easements are given in the plat showing front, side and rear yard setbacks.

1976

CANTON DRIVE

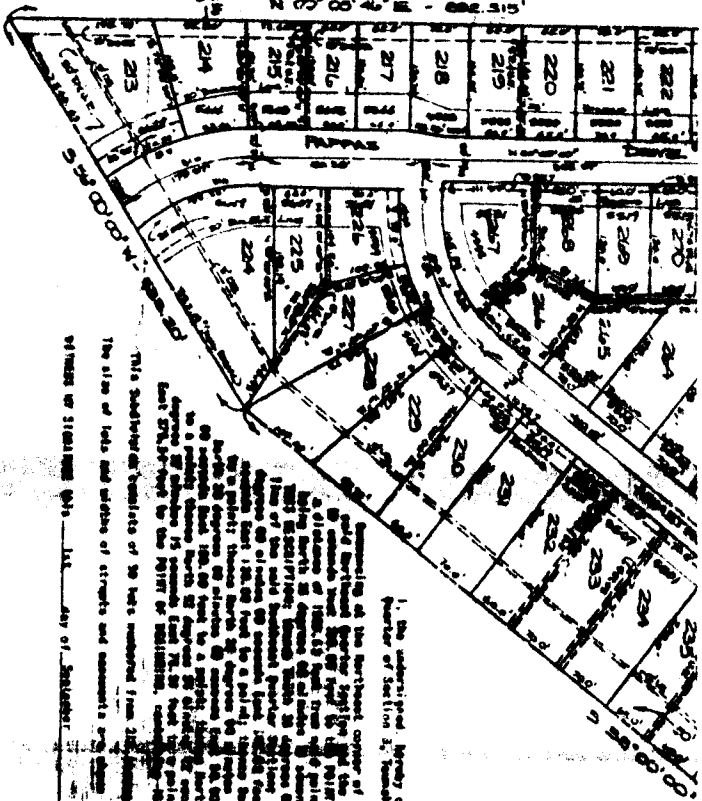
Lot No.	Area (Ac.)	Front Setback (Ft.)	Side Setback (Ft.)	Rear Setback (Ft.)
1	0.25	30	10	10
2	0.25	30	10	10
3	0.25	30	10	10
4	0.25	30	10	10
5	0.25	30	10	10
6	0.25	30	10	10
7	0.25	30	10	10
8	0.25	30	10	10
9	0.25	30	10	10
10	0.25	30	10	10
11	0.25	30	10	10
12	0.25	30	10	10
13	0.25	30	10	10
14	0.25	30	10	10
15	0.25	30	10	10
16	0.25	30	10	10
17	0.25	30	10	10
18	0.25	30	10	10
19	0.25	30	10	10
20	0.25	30	10	10
21	0.25	30	10	10
22	0.25	30	10	10
23	0.25	30	10	10
24	0.25	30	10	10
25	0.25	30	10	10
26	0.25	30	10	10
27	0.25	30	10	10
28	0.25	30	10	10
29	0.25	30	10	10
30	0.25	30	10	10
31	0.25	30	10	10
32	0.25	30	10	10
33	0.25	30	10	10
34	0.25	30	10	10
35	0.25	30	10	10
36	0.25	30	10	10
37	0.25	30	10	10
38	0.25	30	10	10
39	0.25	30	10	10
40	0.25	30	10	10
41	0.25	30	10	10
42	0.25	30	10	10
43	0.25	30	10	10
44	0.25	30	10	10
45	0.25	30	10	10
46	0.25	30	10	10
47	0.25	30	10	10
48	0.25	30	10	10
49	0.25	30	10	10
50	0.25	30	10	10
51	0.25	30	10	10
52	0.25	30	10	10
53	0.25	30	10	10
54	0.25	30	10	10
55	0.25	30	10	10
56	0.25	30	10	10
57	0.25	30	10	10
58	0.25	30	10	10
59	0.25	30	10	10
60	0.25	30	10	10



Surveyor
Madison County, Indiana
1976
Map Land Surveyor - Indiana 110234

ARLINGTON ACRES — SECTION FOUR

CERTIFICATE OF SURVEY



This Subdivided Tract of 30 lots numbered from 215 through 235, both inclusive, together with streets, easements and public ways as shown on the above plat. The size of lots and widths of streets and easements are shown in figures denoting feet and decimal parts thereof.



Wm. H. ...
Surveyor General
Missouri

1. The undersigned hereby certify that the above plat is true and correct and represents a part of the Subdivided Tract and a part of the Subdivided Tract of Section 4, Township 18 North of Range 1 East in Marion County, Indiana, being more particularly described as follows, to-wit:

2. The Subdivided Tract of 30 lots numbered from 215 through 235, both inclusive, together with streets, easements and public ways as shown on the above plat. The size of lots and widths of streets and easements are shown in figures denoting feet and decimal parts thereof.

3. The streets shown on the above plat are hereby dedicated to the public use of the State of Indiana, and the same shall be subject to the same as if they were streets of the State of Indiana. The streets shown on the above plat are hereby dedicated to the public use of the State of Indiana, and the same shall be subject to the same as if they were streets of the State of Indiana.

4. All easements and rights of way shown on the above plat are hereby dedicated to the public use of the State of Indiana, and the same shall be subject to the same as if they were easements and rights of way of the State of Indiana.

5. The survey shown on the above plat was made by the undersigned on the 15th day of September, 1972, and the same is true and correct and represents a part of the Subdivided Tract and a part of the Subdivided Tract of Section 4, Township 18 North of Range 1 East in Marion County, Indiana, being more particularly described as follows, to-wit:

6. The Subdivided Tract of 30 lots numbered from 215 through 235, both inclusive, together with streets, easements and public ways as shown on the above plat. The size of lots and widths of streets and easements are shown in figures denoting feet and decimal parts thereof.

7. The streets shown on the above plat are hereby dedicated to the public use of the State of Indiana, and the same shall be subject to the same as if they were streets of the State of Indiana.

8. All easements and rights of way shown on the above plat are hereby dedicated to the public use of the State of Indiana, and the same shall be subject to the same as if they were easements and rights of way of the State of Indiana.

9. The survey shown on the above plat was made by the undersigned on the 15th day of September, 1972, and the same is true and correct and represents a part of the Subdivided Tract and a part of the Subdivided Tract of Section 4, Township 18 North of Range 1 East in Marion County, Indiana, being more particularly described as follows, to-wit:

10. The Subdivided Tract of 30 lots numbered from 215 through 235, both inclusive, together with streets, easements and public ways as shown on the above plat. The size of lots and widths of streets and easements are shown in figures denoting feet and decimal parts thereof.



11. The undersigned hereby certify that the above plat is true and correct and represents a part of the Subdivided Tract and a part of the Subdivided Tract of Section 4, Township 18 North of Range 1 East in Marion County, Indiana, being more particularly described as follows, to-wit:

12. The Subdivided Tract of 30 lots numbered from 215 through 235, both inclusive, together with streets, easements and public ways as shown on the above plat. The size of lots and widths of streets and easements are shown in figures denoting feet and decimal parts thereof.

13. The streets shown on the above plat are hereby dedicated to the public use of the State of Indiana, and the same shall be subject to the same as if they were streets of the State of Indiana.

14. All easements and rights of way shown on the above plat are hereby dedicated to the public use of the State of Indiana, and the same shall be subject to the same as if they were easements and rights of way of the State of Indiana.

15. The survey shown on the above plat was made by the undersigned on the 15th day of September, 1972, and the same is true and correct and represents a part of the Subdivided Tract and a part of the Subdivided Tract of Section 4, Township 18 North of Range 1 East in Marion County, Indiana, being more particularly described as follows, to-wit:

16. The Subdivided Tract of 30 lots numbered from 215 through 235, both inclusive, together with streets, easements and public ways as shown on the above plat. The size of lots and widths of streets and easements are shown in figures denoting feet and decimal parts thereof.

17. The streets shown on the above plat are hereby dedicated to the public use of the State of Indiana, and the same shall be subject to the same as if they were streets of the State of Indiana.

18. All easements and rights of way shown on the above plat are hereby dedicated to the public use of the State of Indiana, and the same shall be subject to the same as if they were easements and rights of way of the State of Indiana.

19. The survey shown on the above plat was made by the undersigned on the 15th day of September, 1972, and the same is true and correct and represents a part of the Subdivided Tract and a part of the Subdivided Tract of Section 4, Township 18 North of Range 1 East in Marion County, Indiana, being more particularly described as follows, to-wit:

20. The Subdivided Tract of 30 lots numbered from 215 through 235, both inclusive, together with streets, easements and public ways as shown on the above plat. The size of lots and widths of streets and easements are shown in figures denoting feet and decimal parts thereof.

Witness my signature and material seal this 15th day of September, 1972.

By Commission Expires: Mar. 28, 1978

Notary Public: Robert L. Stolt

Before me, a Notary Public in and for the County of Marion, State of Indiana, personally appeared Robert L. Stolt, President of the Surveyors Association of Marion County, Indiana, who acknowledged to me the execution of the above Certificate of Survey as his voluntary act and deed.

ATTEST: Robert L. Stolt
ROBERT L. STOLT
ASSISTANT SECRETARY

APPROVAL: Wm. H. ...
SURVEYOR GENERAL
STATE OF MISSOURI