

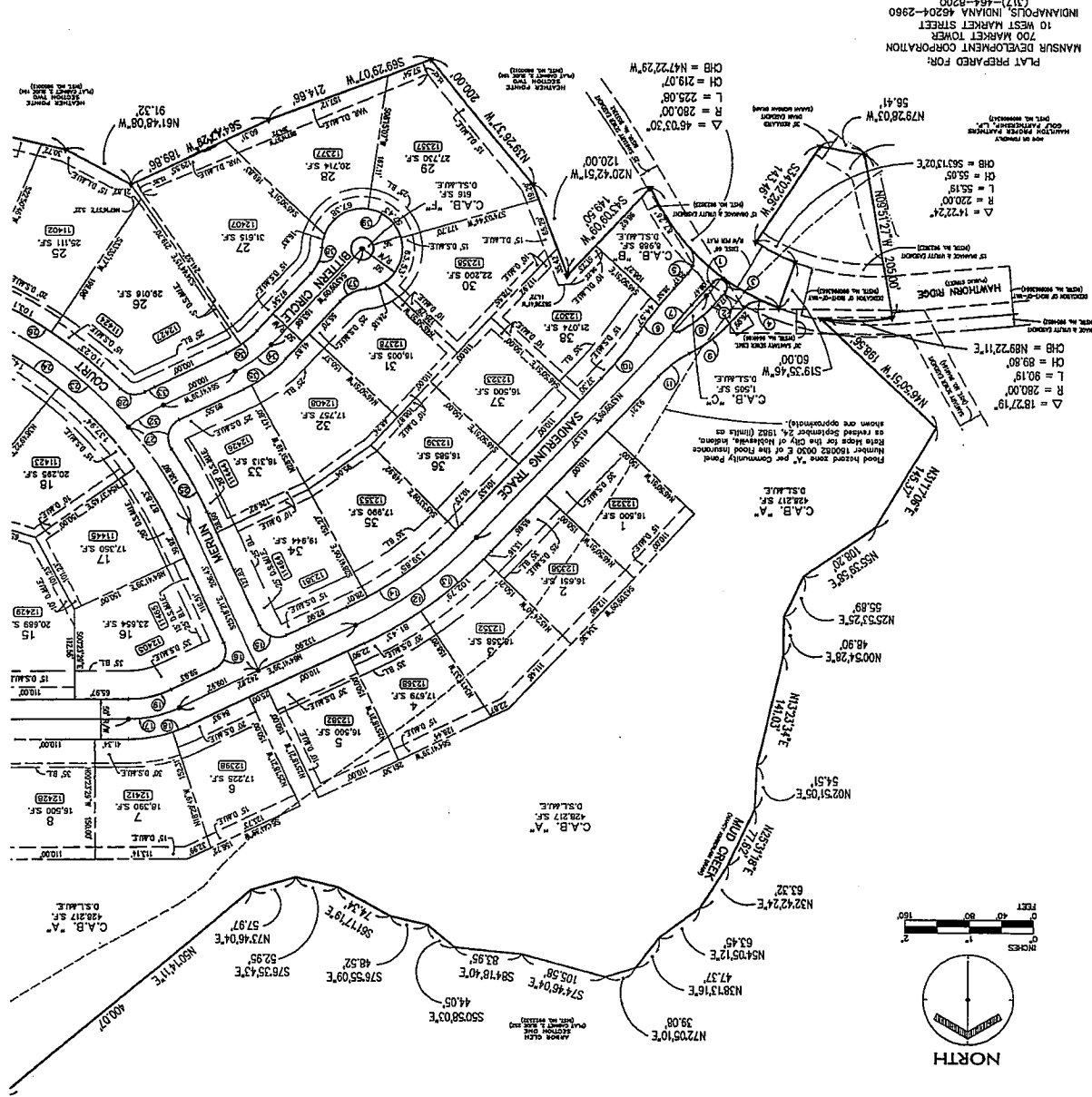
**SECONDARY PLAT
AN ADDITION TO
AUDUBON TRACE
HAMILTON COUNTY, INDIANA**

MPA
MELTON-PACKARD & ASSOCIATES
5444 Colburn Road
Indianapolis, Indiana 46226
Office: (317) 577-0099 • Fax: (317) 577-1879

- LEGEND**
- CONCRETE MONUMENT
 - 5/8" REBAR W/ ALUMINUM CAP
 - BUILDING LINE
 - DRAINAGE & LANDSCAPE EASIMENT
 - DRAINAGE, SANITARY SEWER & UTILITY EASIMENT
 - VARIABLE WIDTH DRAINAGE, LANDSCAPE & UTILITY EASIMENT
 - DRAINAGE, SANITARY SEWER & UTILITY EASIMENT
 - DRAINAGE, SANITARY SEWER, LANDSCAPE & UTILITY EASIMENT
 - DRAINAGE, SANITARY SEWER, LANDSCAPE & UTILITY EASIMENT
 - ADDRESS
 - COMMON AREA BLOCK A

CURVE	DELTA	RADIUS	LENGTH	BEARING	CHORD
1	0.70217°	250.00'	30.00'	N48.803°E	30.88'
2	0.41145°	83.84'	6.81'	N41.881°E	8.00'
3	12.83816°	8.87'	0.87'	N46.811°E	10.20'
4	8.8812°	26.00'	30.48'	N78.815°E	28.81'
5	0.82117°	5007.811'	27.24'	S007.811°W	33.88'
6	0.82117°	5007.811'	27.24'	S007.811°W	33.88'
7	2.10°	200.00'	23.00'	N38.731°E	24.04'
8	2.10°	200.00'	23.00'	N38.731°E	24.04'
9	0.82117°	5007.811'	27.24'	S007.811°W	33.88'
10	0.82117°	5007.811'	27.24'	S007.811°W	33.88'
11	0.82117°	5007.811'	27.24'	S007.811°W	33.88'
12	21.22°	500.00'	182.88'	N53.524°E	188.88'
13	21.22°	500.00'	182.88'	N53.524°E	188.88'
14	21.22°	500.00'	182.88'	N53.524°E	188.88'
15	21.22°	500.00'	182.88'	N53.524°E	188.88'
16	21.22°	500.00'	182.88'	N53.524°E	188.88'
17	21.22°	500.00'	182.88'	N53.524°E	188.88'
18	21.22°	500.00'	182.88'	N53.524°E	188.88'
19	21.22°	500.00'	182.88'	N53.524°E	188.88'
20	21.22°	500.00'	182.88'	N53.524°E	188.88'
21	21.22°	500.00'	182.88'	N53.524°E	188.88'
22	21.22°	500.00'	182.88'	N53.524°E	188.88'
23	21.22°	500.00'	182.88'	N53.524°E	188.88'
24	21.22°	500.00'	182.88'	N53.524°E	188.88'
25	21.22°	500.00'	182.88'	N53.524°E	188.88'
26	21.22°	500.00'	182.88'	N53.524°E	188.88'
27	21.22°	500.00'	182.88'	N53.524°E	188.88'
28	21.22°	500.00'	182.88'	N53.524°E	188.88'
29	21.22°	500.00'	182.88'	N53.524°E	188.88'
30	21.22°	500.00'	182.88'	N53.524°E	188.88'
31	21.22°	500.00'	182.88'	N53.524°E	188.88'
32	21.22°	500.00'	182.88'	N53.524°E	188.88'
33	21.22°	500.00'	182.88'	N53.524°E	188.88'
34	21.22°	500.00'	182.88'	N53.524°E	188.88'
35	21.22°	500.00'	182.88'	N53.524°E	188.88'
36	21.22°	500.00'	182.88'	N53.524°E	188.88'
37	21.22°	500.00'	182.88'	N53.524°E	188.88'
38	21.22°	500.00'	182.88'	N53.524°E	188.88'
39	21.22°	500.00'	182.88'	N53.524°E	188.88'
40	21.22°	500.00'	182.88'	N53.524°E	188.88'

PC 2 sld 485
200000046478
11.84 P.M. RECORD IN
HAMILTON COUNTY, INDIANA
MARY L. CLARK
09-18-2000 AT 01:38 P.M.
PLAT
29.00



PLAT PREPARED FOR:
MANSUR DEVELOPMENT CORPORATION
10 WEST MARKET STREET
INDIANAPOLIS, INDIANA 46204-2980
(317)-464-8200

