

101127823



BOULEVARD TERRACE SECTION REVISED

AN ADDITION TO THE CITY OF INDIANAPOLIS

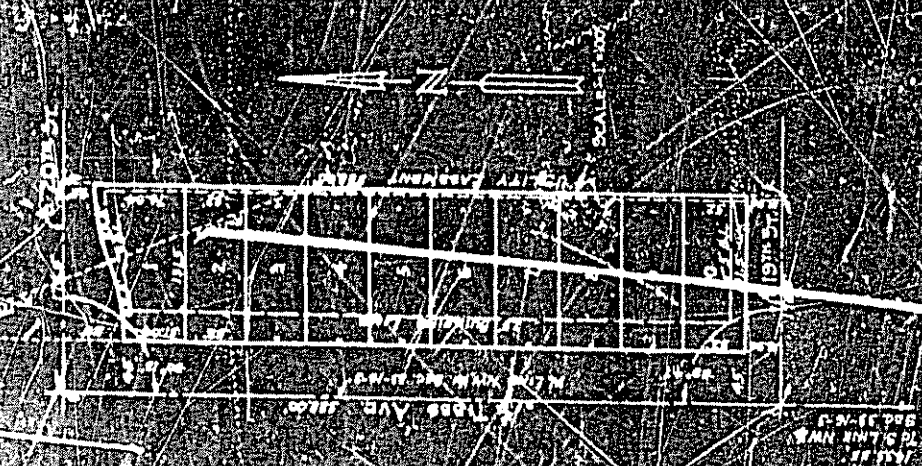
THE INCORPORATED CITY OF INDIANAPOLIS, INDOIANA, HEREBY CERTIFY THAT THE WITHIN PLAN IS TRUE AND CORRECT AND REPRESENTS THE REALITY OF BOULEVARD TERRACE, AN ADDITION TO THE CITY OF INDIANAPOLIS, INDIANA, AS RECORDED IN PLAT 27, PAGE 20 OF THE RECORDS OF MARION COUNTY, INDIANA. THIS RE-SECTIONING CELESTES C. T. STEEG'S HOME-DESIGNED AND CONSTRUCTED PLANS HEREON AND STREETS ARE SHOWN ON THE WITHIN PLAT IN SQUARES DATED AND RECORDED IN PLAT 18, PAGE 10 OF JULY, 1946.

HENRY STEEG & ASSOCIATES, ENGINEERS
BY *[Signature]*
REGISTERED ENGINEER NO. 1486, INDIANA

THE CITY OF INDIANAPOLIS, INDOIANA, HEREBY CERTIFY THAT THE WITHIN PLAN IS TRUE AND CORRECT AND REPRESENTS THE REALITY OF BOULEVARD TERRACE, AN ADDITION TO THE CITY OF INDIANAPOLIS, INDIANA, AS RECORDED IN PLAT 27, PAGE 20 OF THE RECORDS OF MARION COUNTY, INDIANA. THIS RE-SECTIONING CELESTES C. T. STEEG'S HOME-DESIGNED AND CONSTRUCTED PLANS HEREON AND STREETS ARE SHOWN ON THE WITHIN PLAT IN SQUARES DATED AND RECORDED IN PLAT 18, PAGE 10 OF JULY, 1946.

STATE OF INDIANA
COUNTY OF MARION
I, BRUCE W. A. NOTARY PUBLIC IN AND FOR SAID COUNTY, DO HEREBY APPEAR AND KNOW THE EXECUTION OF THE FOREGOING INSTRUMENT BY CELESTES C. T. STEEG, REGISTERED ENGINEER NO. 1486, INDIANA, AND BY *[Signature]*, PRESIDENT OF THE BOULEVARD TERRACE RE-SECTIONING CORPORATION, AND BY *[Signature]*, SECRETARY OF SAID CORPORATION, AND KNOWING THE CONTENTS AND MEANING OF THE FOREGOING INSTRUMENT, I HAVE HEREON SET MY SEAL AND SIGNATURE AND SEAL AND SIGNATURE OF SAID CORPORATION.

CELESTES C. T. STEEG, REGISTERED ENGINEER NO. 1486, INDIANA
[Signature]
PRESIDENT
[Signature]
SECRETARY



BOWLEVEARD TERRACE SECTION REVISED

IN ADDITION TO THE PLAN OF INDIANAPOLIS

BEFORE THE CITY OF INDIANAPOLIS, IN 1911, AND THE BOARD OF PUBLIC SAFETY AND CONSTRUCTION, IN 1912, AND THE CITY OF INDIANAPOLIS, IN 1913, AS REQUIRED BY THE ORDINANCE OF THE BOARD OF PUBLIC SAFETY AND CONSTRUCTION, INDIANAPOLIS, THIS RE-SECTION IS HEREBY REVISED TO CORRECT THE SIZE OF LOTS AND THE WIDTH OF STREETS TO SHOWN ON THE WITHIN PLANNING SQUARES DRAWING OF THE CITY OF INDIANAPOLIS, AS ADOPTED BY THE BOARD OF PUBLIC SAFETY AND CONSTRUCTION, IN 1911, AND THE CITY OF INDIANAPOLIS, IN 1913.

W. H. WALKER
CITY ENGINEER

APPROVED

W. H. WALKER
CITY ENGINEER

APPROVED

W. H. WALKER
CITY ENGINEER

APPROVED

W. H. WALKER
CITY ENGINEER

APPROVED

W. H. WALKER
CITY ENGINEER

APPROVED

W. H. WALKER
CITY ENGINEER

APPROVED

W. H. WALKER
CITY ENGINEER

APPROVED

W. H. WALKER
CITY ENGINEER

APPROVED

W. H. WALKER
CITY ENGINEER

APPROVED

W. H. WALKER
CITY ENGINEER

APPROVED

W. H. WALKER
CITY ENGINEER