

FINAL PLAN FOR BOX ORCHARD

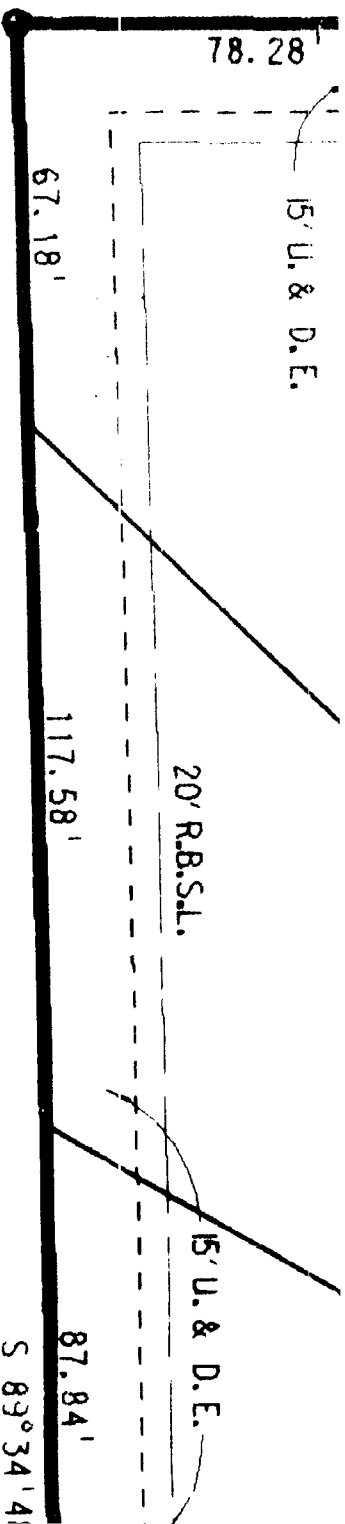
600.00'

363.31'

35.01'

ET

41.74	N 06°38'01"	E
20.86	S 31°18'39"	E
21.21	N 59°37'54"	E
95.89	S 46°45'14"	E
61.56	S 61°06'44"	E
79.39	N 43°07'56"	E
24.38	S 61°34'12"	E
57.77	S 38°22'25"	E
36.63	N 07°37'06"	E
30.53	N 07°37'06"	E
42.74	N 07°37'06"	E
219.40	N 46°23'40"	W
182.84	N 46°23'40"	W
255.97	N 46°23'40"	W
74.49	S 00°59'07"	E
34.29	N 65°40'53"	E
34.29	S 72°28'08"	E



No fence, wall, hedge, or shrub planting which obstructs site lines at elevations between two and six feet above the street shall be placed or permitted to remain within the triangular area formed by the street or property lines and a line connecting points 25 feet from the intersection of said street lines. The same site line limitations shall apply to any lot within ten feet from the intersection of a street line with the edge of a driveway. No trees shall be permitted to remain within such distances of such intersections unless the foliage line is maintained at sufficient height to prevent obstruction of site lines.

NOT PL

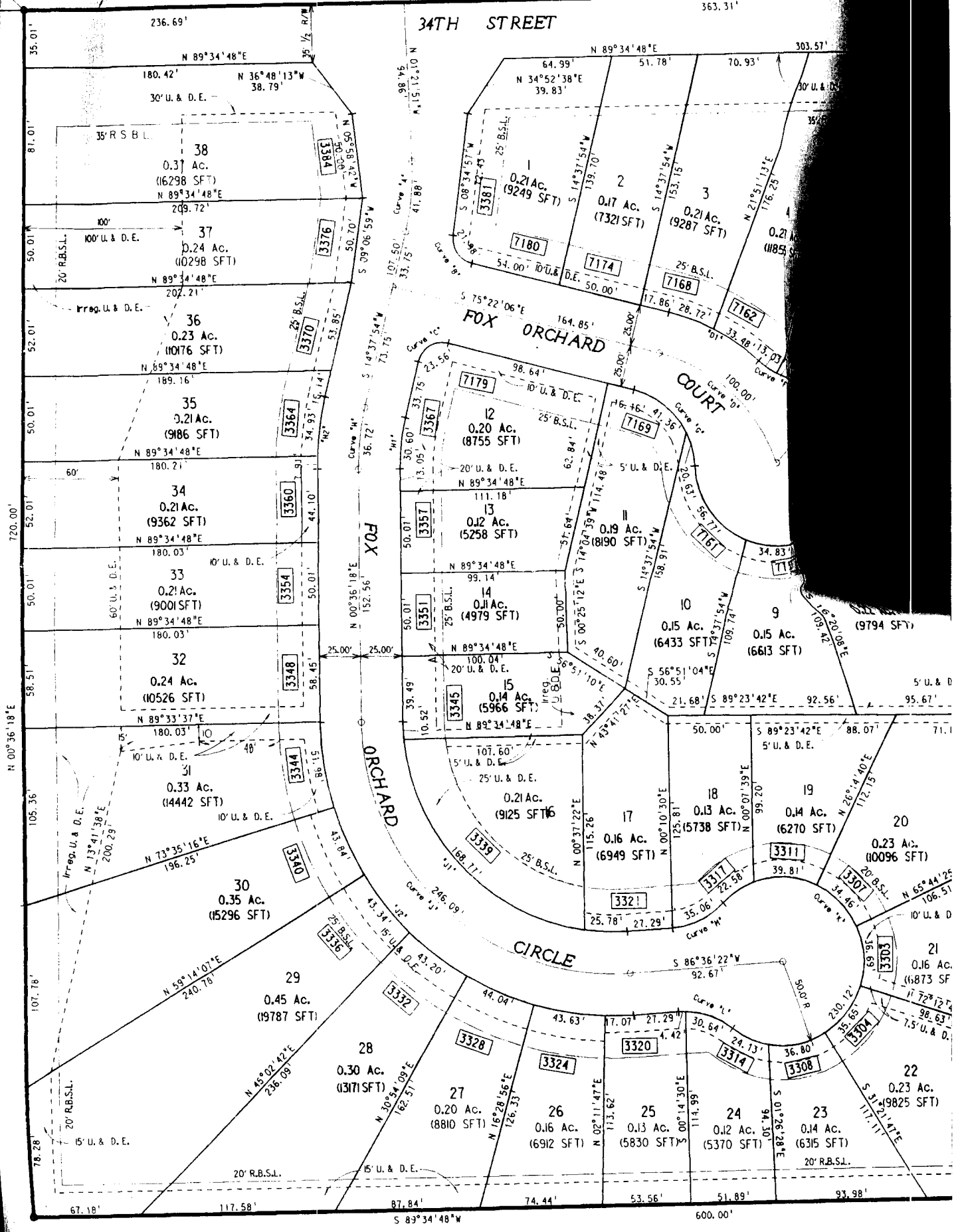
NORTH LINE SW1/4
SECTION 23, T-16-N, R-2-E

N 89°34'48"E

600.00'

363.31'

34TH STREET



38
0.37 Ac.
(16298 SFT)

37
0.24 Ac.
(10298 SFT)

36
0.23 Ac.
(10176 SFT)

35
0.21 Ac.
(9186 SFT)

34
0.21 Ac.
(9362 SFT)

33
0.21 Ac.
(9001 SFT)

32
0.24 Ac.
(10526 SFT)

31
0.33 Ac.
(14442 SFT)

30
0.35 Ac.
(15296 SFT)

29
0.45 Ac.
(19787 SFT)

28
0.30 Ac.
(13171 SFT)

27
0.20 Ac.
(8810 SFT)

26
0.16 Ac.
(6912 SFT)

25
0.13 Ac.
(5830 SFT)

24
0.12 Ac.
(5370 SFT)

23
0.14 Ac.
(6315 SFT)

22
0.23 Ac.
(9825 SFT)

21
0.16 Ac.
(6873 SFT)

20
0.23 Ac.
(10096 SFT)

19
0.14 Ac.
(6270 SFT)

18
0.13 Ac.
(5738 SFT)

17
0.16 Ac.
(6949 SFT)

16
0.21 Ac.
(9125 SFT)

15
0.14 Ac.
(5966 SFT)

14
0.11 Ac.
(4979 SFT)

13
0.12 Ac.
(5258 SFT)

12
0.20 Ac.
(8755 SFT)

11
0.19 Ac.
(8190 SFT)

10
0.15 Ac.
(6433 SFT)

9
0.15 Ac.
(6613 SFT)

8
0.15 Ac.
(6433 SFT)

7
0.15 Ac.
(6433 SFT)

6
0.15 Ac.
(6433 SFT)

5
0.15 Ac.
(6433 SFT)

4
0.21 Ac.
(9287 SFT)

3
0.21 Ac.
(9287 SFT)

2
0.17 Ac.
(7321 SFT)

1
0.21 Ac.
(9249 SFT)

3381

3382

3383

3384

3385

3386

3387

3388

3389

3390

3391

3392

3393

3394

3395

3396

3397

3398

3399

3400

3401

3402

3403

3404

3405

3406

3407

3408

3409

3410

3411

3412

3413

3414

3415

3416

3417

3418

3419

3420

3421

3422

3423

3424

3425

3426

3427

3428

3429

3430

3431

3432

3433

3434

3435

3436

3437

3438

3439

3440

3441

3442

3443

3444

3445

3446

3447

3448

3449

3450

3451

3452

3453

3454

3455

3456

3457

3458

3459

3460

3461

3462

3463

3464

3465

3466

3467

3468

3469

3470

3471

3472

3473

3474

3475

3476

3477

3478

3479

3480

3481

3482

3483

3484

3485

3486

3487

3488

3489

3490

3491

3492

3493

3494

3495

3496

3497

3498

3499

3500

3501

3502

3503

3504

3505

3506

3507

3508

3509

3510

3511

3512

3513

3514

3515

3516

3517

3518

3519

3520

3521

3522

3523

3524

3525

3526

3527

3528

3529

3530

3531

3532

3533

3534

3535

3536

3537

3538

3539

3540

3541

3542

3543

3544

3545

3546

3547

3548

3549

3550

3551

3552

3553

3554

3555

3556

3557

3558

3559

3560

3561

3562

3563

3564

3565

3566

3567

3568

3569

3570

3571

3572

3573

3574

3575

3576

3577

3578

3579

3580

3581

3582

3583

3584

3585

3586

3587

3588

3589

3590

3591

3592

3593

3594

3595

3596

3597

3598

3599

3600

3601

3602

3603

3604

3605

3606

3607

3608

3609

3610

3611

3612

3613

3614

3615

3616

3617

3618

3619

3620

3621

3622

3623

3624

3625

3626

3627

3628

3629

3630

3631