

KEYSTONE SUBDIVISION, SECTION 1 - FINAL PLAT

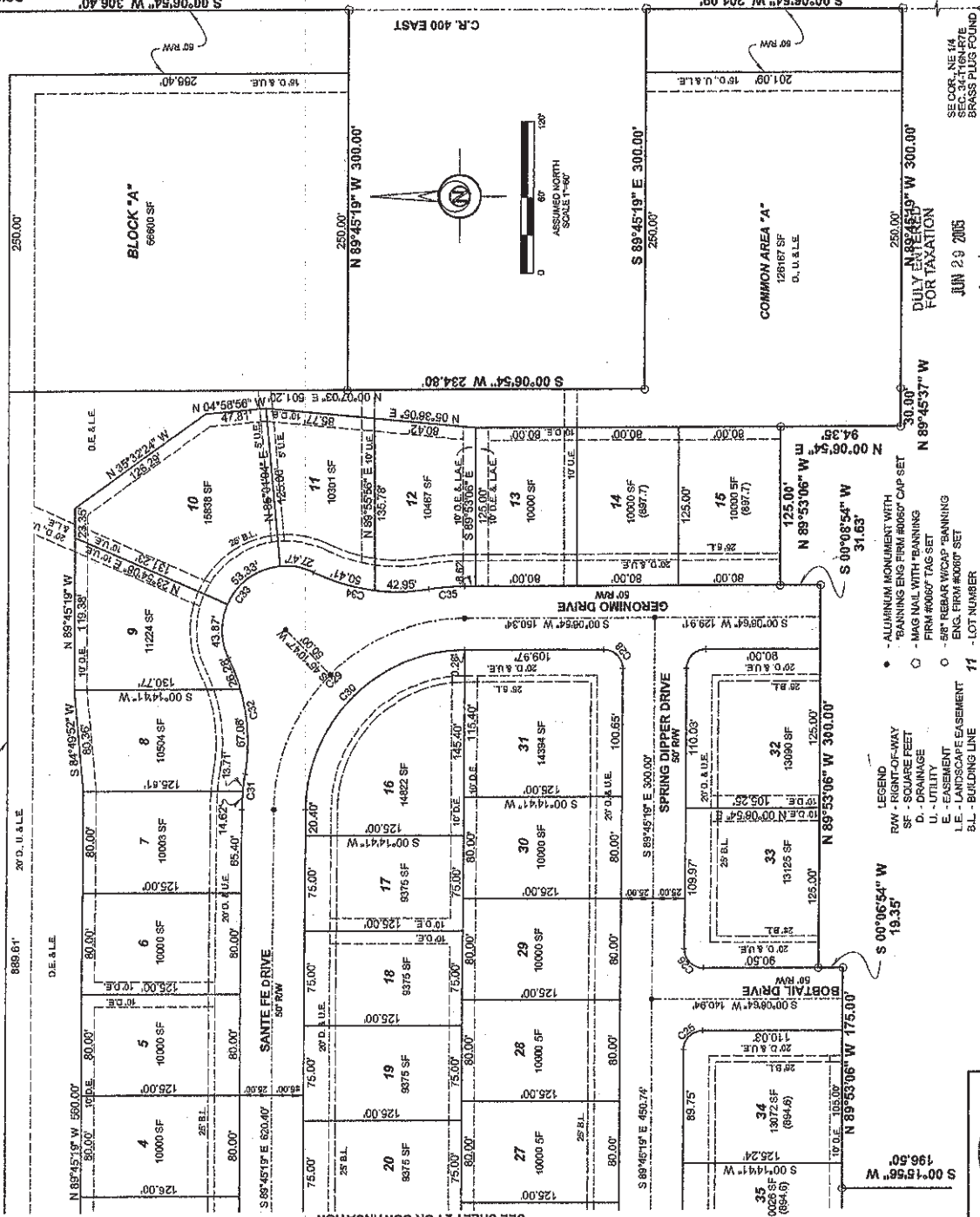
PART OF THE NE 1/4, SEC. 34-T18N-R7E
CITY OF GREENFIELD, HANCOCK COUNTY, INDIANA

C.R. 100 NORTH (A.K.A. MCKENZIE ROAD)
S 89°45'19" E 1525.00'

COROLYN GRASS
HANCOCK COUNTY RECORDER
REL Date 06/29/2005 Time 15:34:49
FEE: 38.00
I 050000051
Page 1 of 5

C.A.B.C. SLIDE 2.DWG
052000257

POINT OF BEGINNING
NE COR. NE 1/4
SEC. 34-T18N-R7E
BRASS PLUG FOUND



SE COR. NE 1/4
SEC. 34-T18N-R7E
BRASS PLUG FOUND

JUN 29 2005

Shawn L. Haggard
Surveyor
Hancock County, Indiana

PRELIMINARY PLAT	FINAL PLAT	RECORDING	BLH
Checked: _____	Checked: _____	Checked: _____	Scale: 1"=60'
Date: _____	Date: _____	Date: _____	Date: 06/29/2005
Project: 05180	Project: 05180	Project: 05180	Sheet 1 of 5

BANNING ENGINEERING
699 TOWER ROAD, SUITE #100
PLAINFIELD, IN 46168
BUS: (317) 639-2881, FAX: (317) 836-9171
E-MAIL: banningtong@banning-eng.com

Witness my signature this 29th day of June 2005
Signature: *Shawn L. Haggard*
Shawn L. Haggard Registered Land Surveyor - Indiana - # L229800001



- ALUMINUM MONUMENT WITH "BANNING ENG FIRM #00650" CAP SET
- MAG NAIL WITH "BANNING FIRM #00650" TAG SET
- 5/8" REBAR W/ CAP "BANNING ENG. FIRM #00650" SET
- LOT NUMBER

- RIGHT-OF-WAY
- SQUARE FEET
- DRAINAGE
- UTILITY
- EASEMENT
- LANDSCAPE EASEMENT
- BUILDING LINE
- FLOOD PROTECTION GRADE
- LANE ACCESS EASEMENT

KEYSTONE SUBDIVISION, SECTION 1 - FINAL PLAT

PART OF THE NE 1/4, SEC. 34-T16N-R7E
CITY OF GREENFIELD, HANCOCK COUNTY, INDIANA

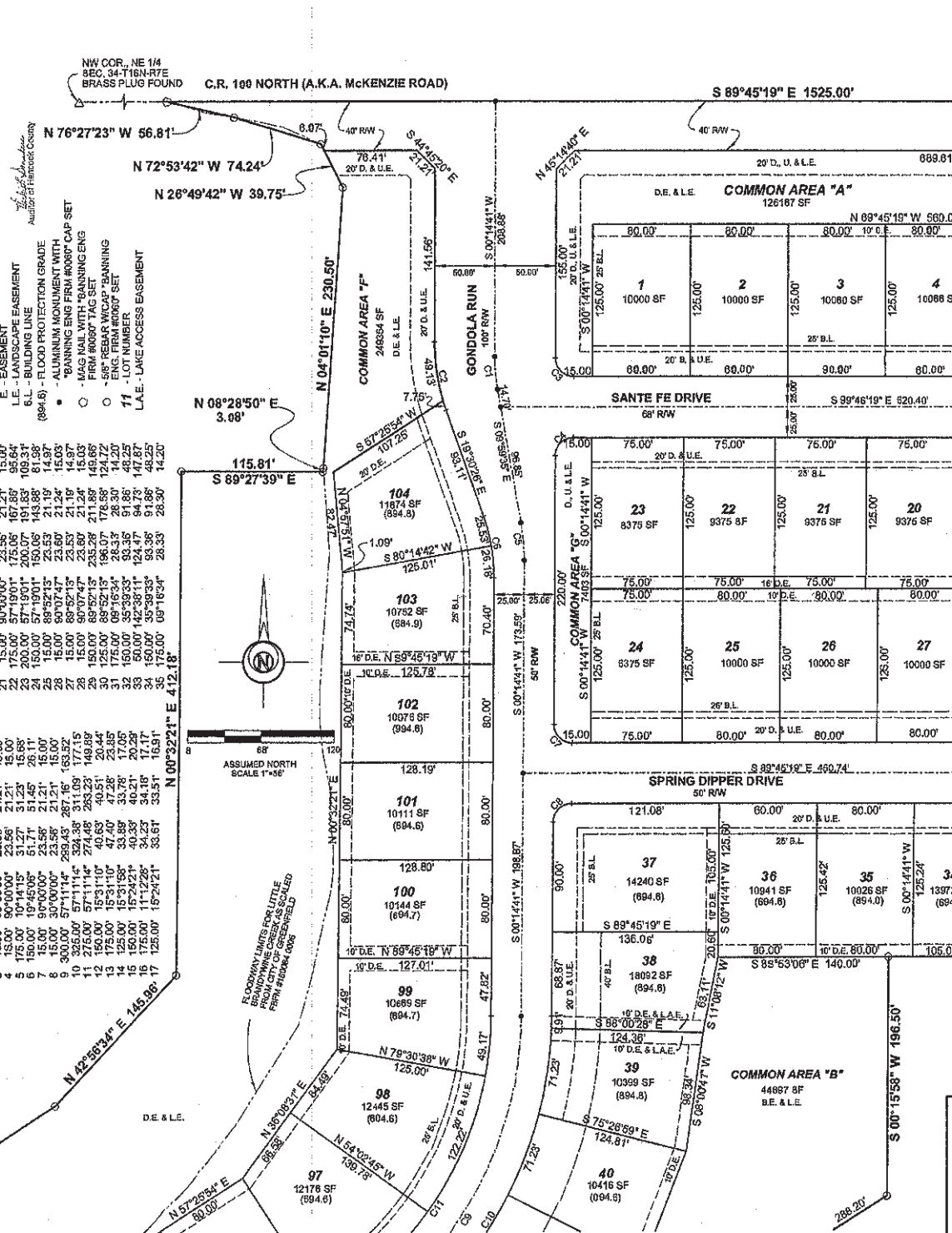
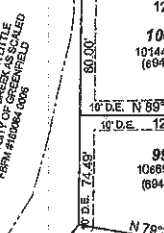
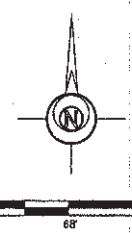
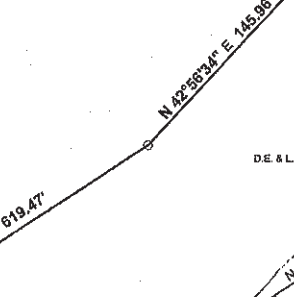
Page 2 of 5
I 050200651
C.A.S. SLIDE 2.06

DULY ENTERED
FOR TAXATION 05/20/08
JUN 28 2005

LEGEND

- RAW - RIGHT-OF-WAY
- SF - SQUARE FEET
- D - DRAINAGE
- U - UTILITY
- E - EASEMENT
- L.E. - LANDSCAPE EASEMENT
- B.L. - BUILDING LINE
- (894.6) - FLOOD PROTECTION GRADE
- ALUMINUM MONUMENT WITH "BANNING ENG FIRM #0089" CAP SET
- "MAG NAIL WITH 'BANNING ENG FIRM #0089" TAG SET
- "BANK MARK WITH 'BANNING ENG FIRM #0089" TAG SET
- 11 - LOT NUMBER
- L.A.E. - LAKE ACCESS EASEMENT

#	Radius	Delta	Chord	Tangent
1	150.00'	68°41'17"	20.40'	13.91'
2	150.00'	90°05'34"	23.59'	15.02'
3	150.00'	90°03'00"	23.56'	15.00'
4	150.00'	90°03'00"	23.56'	15.00'
5	175.00'	57°19'01"	175.00'	95.84'
6	150.00'	57°19'01"	150.00'	95.84'
7	150.00'	88°52'13"	23.53'	14.87'
8	150.00'	88°52'13"	23.53'	14.87'
9	150.00'	88°52'13"	23.53'	14.87'
10	150.00'	88°52'13"	23.53'	14.87'
11	150.00'	88°52'13"	23.53'	14.87'
12	150.00'	88°52'13"	23.53'	14.87'
13	150.00'	88°52'13"	23.53'	14.87'
14	150.00'	88°52'13"	23.53'	14.87'
15	150.00'	88°52'13"	23.53'	14.87'
16	150.00'	88°52'13"	23.53'	14.87'
17	150.00'	88°52'13"	23.53'	14.87'
18	150.00'	88°52'13"	23.53'	14.87'
19	150.00'	88°52'13"	23.53'	14.87'
20	150.00'	88°52'13"	23.53'	14.87'
21	150.00'	88°52'13"	23.53'	14.87'
22	150.00'	88°52'13"	23.53'	14.87'
23	150.00'	88°52'13"	23.53'	14.87'
24	150.00'	88°52'13"	23.53'	14.87'
25	150.00'	88°52'13"	23.53'	14.87'
26	150.00'	88°52'13"	23.53'	14.87'
27	150.00'	88°52'13"	23.53'	14.87'
28	150.00'	88°52'13"	23.53'	14.87'
29	150.00'	88°52'13"	23.53'	14.87'
30	150.00'	88°52'13"	23.53'	14.87'
31	150.00'	88°52'13"	23.53'	14.87'
32	150.00'	88°52'13"	23.53'	14.87'
33	150.00'	88°52'13"	23.53'	14.87'
34	150.00'	88°52'13"	23.53'	14.87'
35	150.00'	88°52'13"	23.53'	14.87'
36	150.00'	88°52'13"	23.53'	14.87'
37	150.00'	88°52'13"	23.53'	14.87'
38	150.00'	88°52'13"	23.53'	14.87'
39	150.00'	88°52'13"	23.53'	14.87'
40	150.00'	88°52'13"	23.53'	14.87'

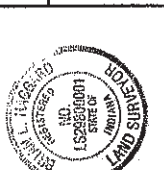


DATE	05/20/08	PROJECT	08072005 - ADDED L.E.'S AND L.A.E.'S
CHECKED	[Signature]	DATE	05/20/08
RECORDED	[Signature]	DATE	05/20/08
DRAWN BY	[Signature]	SCALE	1"=40'
SHEET	2 of 5		

Witness my signature this 7th day of June 2005

Signature: [Signature]
Erian L. Haggard, Registered Land Surveyor - Indiana - # LS2900001

BANNING ENGINEERING
688 TOWER ROAD, SUITE #100
PLAINFIELD, IN 46168
BUS: (317) 839-2681, FAX: (317) 839-8171
E-MAIL: banning@banning-eng.com

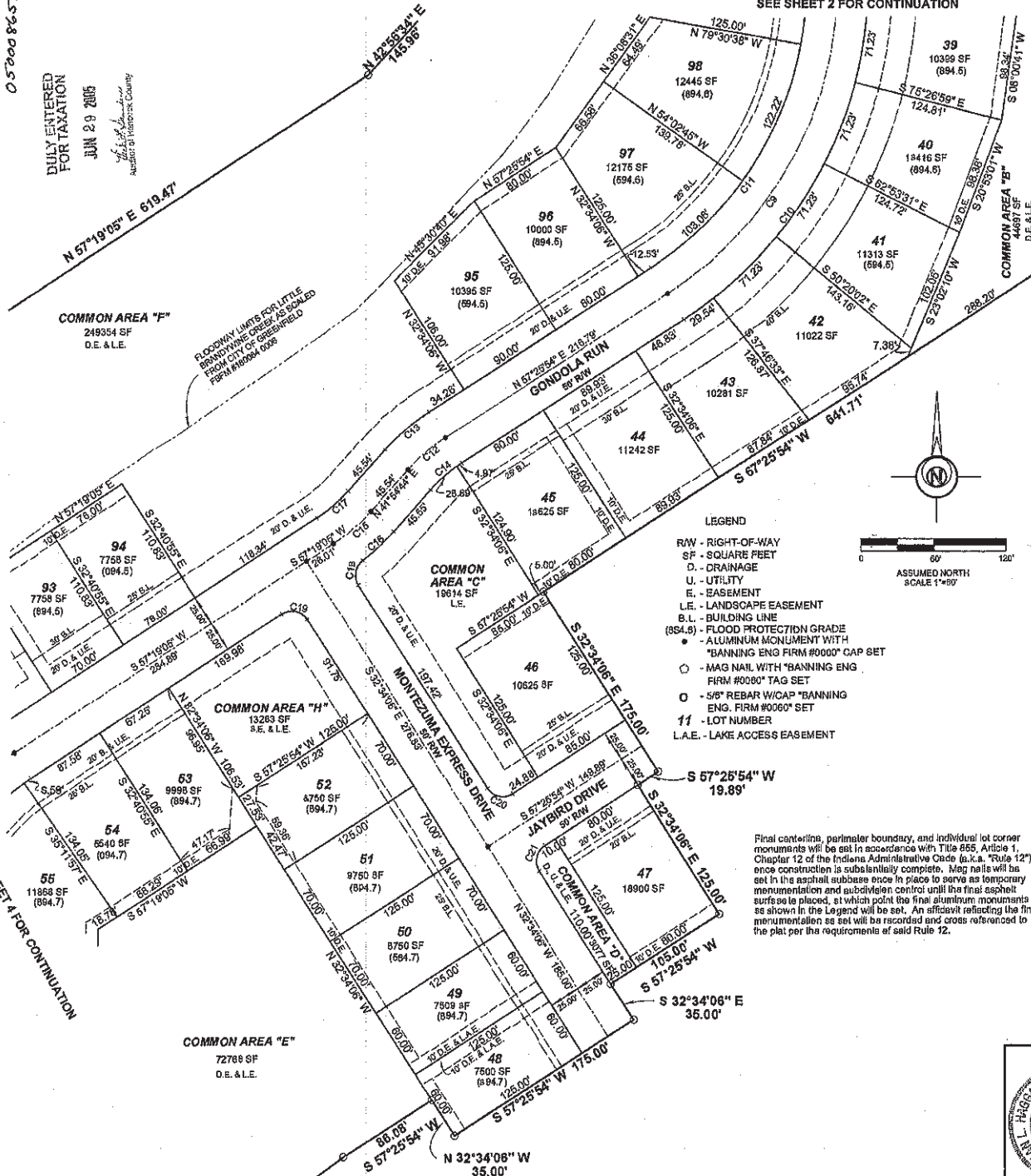


KEYSTONE SUBDIVISION, SECTION 1 - FINAL PLAT

PART OF THE NE 1/4, SEC. 34-T16N-R7E
CITY OF GREENFIELD, HANCOCK COUNTY, INDIANA

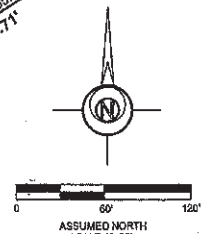
Page 3 of 5
I 050000651
CABC SLIDE 206
050008657

DULY ENTERED
FOR TAXATION
JUN 29 2005
Auditor of Hancock County



SEE SHEET 2 FOR CONTINUATION

- LEGEND**
- RAW - RIGHT-OF-WAY
 - SF - SQUARE FEET
 - D - DRAINAGE
 - U - UTILITY
 - E - EASEMENT
 - L.E. - LANDSCAPE EASEMENT
 - B.L. - BUILDING LINE
 - (84.8) - FLOOD PROTECTION GRADE
 - ALUMINUM MONUMENT WITH "BANNING ENG FIRM #0000" CAP SET
 - MAG NAIL WITH "BANNING ENG FIRM #0080" TAG SET
 - 5/8" REBAR W/CAP "BANNING ENG FIRM #0060" SET
 - 11 - LOT NUMBER
 - L.A.E. - LAKE ACCESS EASEMENT

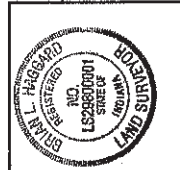


Final centerline, perimeter boundary, and individual lot corner monuments will be set in accordance with Title 665, Article 1, Chapter 12 of the Indiana Administrative Code (a.k.a. "Rule 12") once construction is substantially complete. Mag nails will be set in the asphalt subbase once in place to serve as temporary monumentation and subdivision control until the final asphalt surface is placed, at which point the final aluminum monuments as shown in the Legend will be set. An affidavit reflecting the final monumentation as set will be recorded and cross referenced to the plat per the requirements of said Rule 12.

Drawn:	BLH
Scale:	1"=60'
Checked:	
Date:	
Drawn:	8/4/05
Project:	03180
Sheet:	3 of 5

BANNING ENGINEERING
666 TOMER ROAD, SUITE #100
PLAINFIELD, IN 46161
BUS: (317) 839-2591, FAX: (317) 838-9177
E-MAIL: banning@banning-eng.com

Witness my signature this 17th day of June, 2005
Signature: *Brian L. Haggard*
Brian L. Haggard Registered Land Surveyor - Indiana - # LS29800001



KEYSTONE SUBDIVISION, SECTION 1 - FINAL PLAT

PART OF THE NE 1/4, SEC. 34-T16N-R7E
CITY OF GREENFIELD, HANCOCK COUNTY, INDIANA

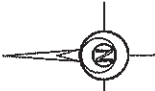
1 030008651 Page 4 of 5

CAB C SLIDE 206
050008657

DULY ENTERED
FOR TAXATION

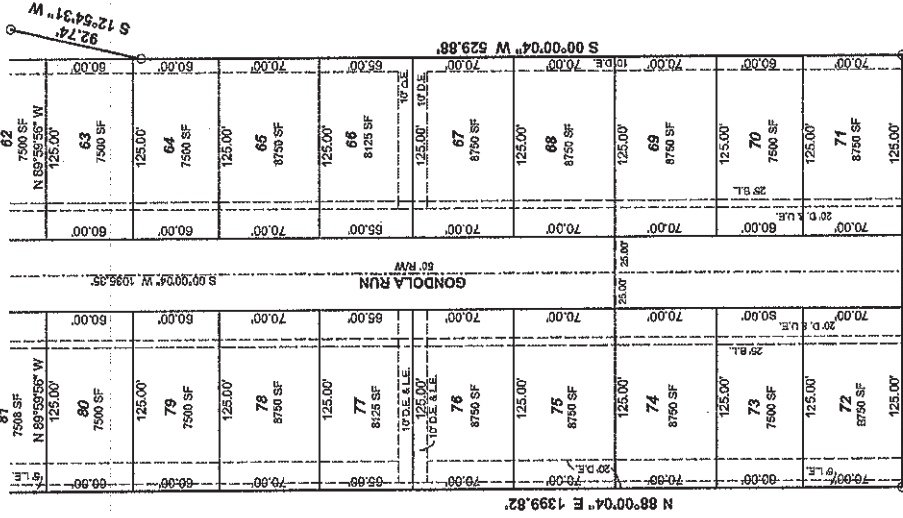
JUN 29 2005

John L. Haggard
Auditor of Hancock County



ASSUMED NORTH
SCALE 1"=60'

SEE BELOW LEFT FOR CONTINUATION



SEE ABOVE RIGHT FOR CONTINUATION

PRELIMINARY PLAT	FINAL PLAT	RECORDING	DEPT.
Check: _____ Date: _____	Check: _____ Date: _____	Check: _____ Date: _____	BLH
03072005 - ADDED L.E.'S AND L.A.E.'S			1-00
03072005 - ADDED L.E.'S AND L.A.E.'S			03180
03072005 - ADDED L.E.'S AND L.A.E.'S			Sheet 4 of 5

Witness my signature this 29th day of June 2005

Signature: *Brian L. Haggard*

Brian L. Haggard Registered Land Surveyor - Indiana - # LS28600001

BANNING ENGINEERING
698 TOWER ROAD, SUITE #100
PLAINFIELD, IN 46168
BUS: (317) 839-2587; FAX: (317) 838-9171
E-MAIL: banning@banning-eng.com



- LEGEND
- RW - RIGHT-OF-WAY
 - SF - SQUARE FEET
 - D - DRAINAGE
 - U - UTILITY
 - E - EASEMENT
 - L.L. - LANDSCAPE EASEMENT
 - L.L. - LINDEN LINE PROTECTION GRADE
 - L.L. - LINDEN LINE EASEMENT
 - - ALUMINUM MOUNTED WITH
 - - TRAINING ENG. FIRM #00807 CAB SET
 - - MAG. NAIL WITH "BANNING
 - - ENG. FIRM #00807 TAG SET
 - - SURVEAS W/0047 "BANNING
 - - ENG. FIRM #00807 SET
 - 11 - LOT NUMBER
 - L.A.E. - LAKE ACCESS EASEMENT

COMMON AREA "E"
52 & L.E.

COMMON AREA "F"
52 & L.E.

FLOODWAY LIGHTS FOR LITTLE
CREEK W/0047 AS SCALED
BELOW CITY OF GREENFIELD
FROM PLAT 0000

SEE SHEET 3 FOR CONTINUATION

SEE ABOVE RIGHT FOR CONTINUATION

