

THE UNDERSIGNED, J.D. HIGGINS, ENGINEER, HAS BEEN PROCEEDED BY THE STATE OF INDIANA, COUNTY OF MARION, INDIANA, AS A duly Licensed Professional Engineer, No. 28388, and is duly qualified to prepare this Final Plat. The undersigned hereby certifies that he is a duly Licensed Professional Engineer, No. 28388, and is duly qualified to prepare this Final Plat. The undersigned hereby certifies that he is a duly Licensed Professional Engineer, No. 28388, and is duly qualified to prepare this Final Plat.

1. THE UNDERSIGNED, J.D. HIGGINS, ENGINEER, HAS BEEN PROCEEDED BY THE STATE OF INDIANA, COUNTY OF MARION, INDIANA, AS A duly Licensed Professional Engineer, No. 28388, and is duly qualified to prepare this Final Plat. The undersigned hereby certifies that he is a duly Licensed Professional Engineer, No. 28388, and is duly qualified to prepare this Final Plat.

2. THE UNDERSIGNED, J.D. HIGGINS, ENGINEER, HAS BEEN PROCEEDED BY THE STATE OF INDIANA, COUNTY OF MARION, INDIANA, AS A duly Licensed Professional Engineer, No. 28388, and is duly qualified to prepare this Final Plat. The undersigned hereby certifies that he is a duly Licensed Professional Engineer, No. 28388, and is duly qualified to prepare this Final Plat.

3. THE UNDERSIGNED, J.D. HIGGINS, ENGINEER, HAS BEEN PROCEEDED BY THE STATE OF INDIANA, COUNTY OF MARION, INDIANA, AS A duly Licensed Professional Engineer, No. 28388, and is duly qualified to prepare this Final Plat. The undersigned hereby certifies that he is a duly Licensed Professional Engineer, No. 28388, and is duly qualified to prepare this Final Plat.

4. THE UNDERSIGNED, J.D. HIGGINS, ENGINEER, HAS BEEN PROCEEDED BY THE STATE OF INDIANA, COUNTY OF MARION, INDIANA, AS A duly Licensed Professional Engineer, No. 28388, and is duly qualified to prepare this Final Plat. The undersigned hereby certifies that he is a duly Licensed Professional Engineer, No. 28388, and is duly qualified to prepare this Final Plat.

5. THE UNDERSIGNED, J.D. HIGGINS, ENGINEER, HAS BEEN PROCEEDED BY THE STATE OF INDIANA, COUNTY OF MARION, INDIANA, AS A duly Licensed Professional Engineer, No. 28388, and is duly qualified to prepare this Final Plat. The undersigned hereby certifies that he is a duly Licensed Professional Engineer, No. 28388, and is duly qualified to prepare this Final Plat.

6. THE UNDERSIGNED, J.D. HIGGINS, ENGINEER, HAS BEEN PROCEEDED BY THE STATE OF INDIANA, COUNTY OF MARION, INDIANA, AS A duly Licensed Professional Engineer, No. 28388, and is duly qualified to prepare this Final Plat. The undersigned hereby certifies that he is a duly Licensed Professional Engineer, No. 28388, and is duly qualified to prepare this Final Plat.

7. THE UNDERSIGNED, J.D. HIGGINS, ENGINEER, HAS BEEN PROCEEDED BY THE STATE OF INDIANA, COUNTY OF MARION, INDIANA, AS A duly Licensed Professional Engineer, No. 28388, and is duly qualified to prepare this Final Plat. The undersigned hereby certifies that he is a duly Licensed Professional Engineer, No. 28388, and is duly qualified to prepare this Final Plat.

8. THE UNDERSIGNED, J.D. HIGGINS, ENGINEER, HAS BEEN PROCEEDED BY THE STATE OF INDIANA, COUNTY OF MARION, INDIANA, AS A duly Licensed Professional Engineer, No. 28388, and is duly qualified to prepare this Final Plat. The undersigned hereby certifies that he is a duly Licensed Professional Engineer, No. 28388, and is duly qualified to prepare this Final Plat.

9. THE UNDERSIGNED, J.D. HIGGINS, ENGINEER, HAS BEEN PROCEEDED BY THE STATE OF INDIANA, COUNTY OF MARION, INDIANA, AS A duly Licensed Professional Engineer, No. 28388, and is duly qualified to prepare this Final Plat. The undersigned hereby certifies that he is a duly Licensed Professional Engineer, No. 28388, and is duly qualified to prepare this Final Plat.

10. THE UNDERSIGNED, J.D. HIGGINS, ENGINEER, HAS BEEN PROCEEDED BY THE STATE OF INDIANA, COUNTY OF MARION, INDIANA, AS A duly Licensed Professional Engineer, No. 28388, and is duly qualified to prepare this Final Plat. The undersigned hereby certifies that he is a duly Licensed Professional Engineer, No. 28388, and is duly qualified to prepare this Final Plat.

11. THE UNDERSIGNED, J.D. HIGGINS, ENGINEER, HAS BEEN PROCEEDED BY THE STATE OF INDIANA, COUNTY OF MARION, INDIANA, AS A duly Licensed Professional Engineer, No. 28388, and is duly qualified to prepare this Final Plat. The undersigned hereby certifies that he is a duly Licensed Professional Engineer, No. 28388, and is duly qualified to prepare this Final Plat.

12. THE UNDERSIGNED, J.D. HIGGINS, ENGINEER, HAS BEEN PROCEEDED BY THE STATE OF INDIANA, COUNTY OF MARION, INDIANA, AS A duly Licensed Professional Engineer, No. 28388, and is duly qualified to prepare this Final Plat. The undersigned hereby certifies that he is a duly Licensed Professional Engineer, No. 28388, and is duly qualified to prepare this Final Plat.

13. THE UNDERSIGNED, J.D. HIGGINS, ENGINEER, HAS BEEN PROCEEDED BY THE STATE OF INDIANA, COUNTY OF MARION, INDIANA, AS A duly Licensed Professional Engineer, No. 28388, and is duly qualified to prepare this Final Plat. The undersigned hereby certifies that he is a duly Licensed Professional Engineer, No. 28388, and is duly qualified to prepare this Final Plat.

14. THE UNDERSIGNED, J.D. HIGGINS, ENGINEER, HAS BEEN PROCEEDED BY THE STATE OF INDIANA, COUNTY OF MARION, INDIANA, AS A duly Licensed Professional Engineer, No. 28388, and is duly qualified to prepare this Final Plat. The undersigned hereby certifies that he is a duly Licensed Professional Engineer, No. 28388, and is duly qualified to prepare this Final Plat.

15. THE UNDERSIGNED, J.D. HIGGINS, ENGINEER, HAS BEEN PROCEEDED BY THE STATE OF INDIANA, COUNTY OF MARION, INDIANA, AS A duly Licensed Professional Engineer, No. 28388, and is duly qualified to prepare this Final Plat. The undersigned hereby certifies that he is a duly Licensed Professional Engineer, No. 28388, and is duly qualified to prepare this Final Plat.

STORM DRAINAGE CURVES (DRAINAGE AND FLOOD CONTROL)

CURVE	BEAM	RADIUS	LENGTH	CHORD	TANGENT	CHORD BEARING
A	1727.07'	250.00	185.36	194.17	96.94	N 80°27'08" W
B	1744.53'	250.00	23.77	58.68	26.00	N 62°53'03" W

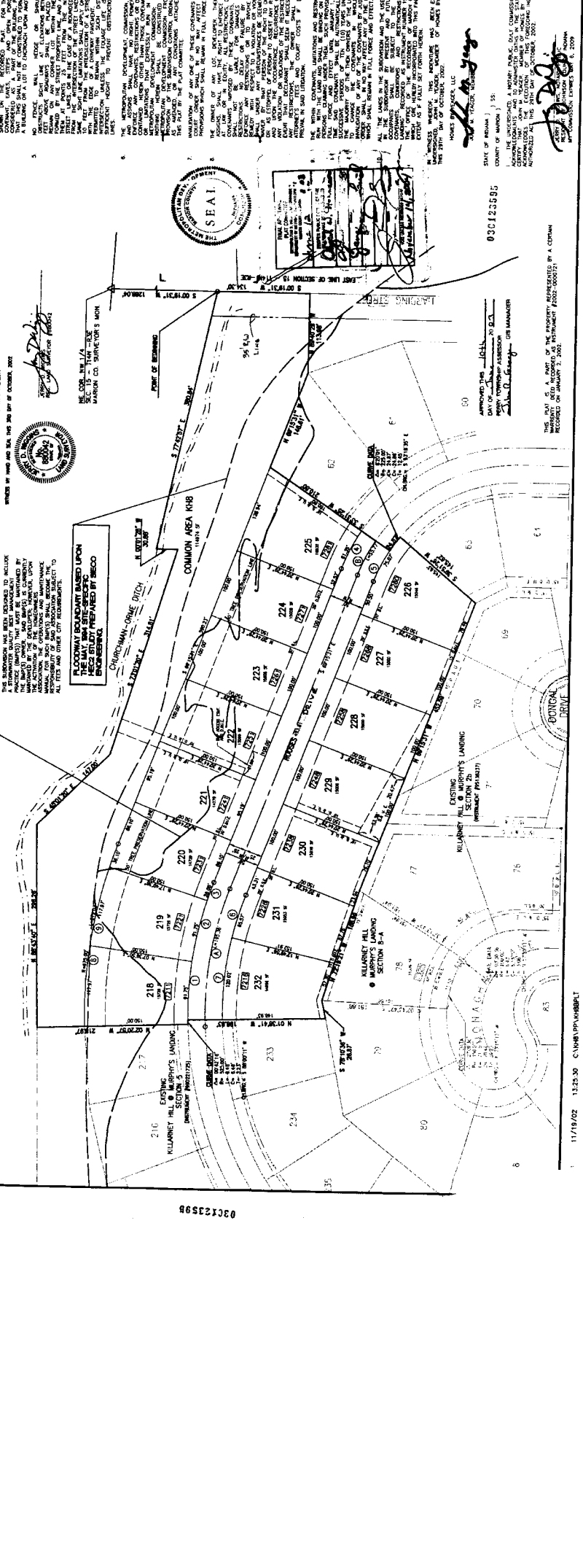
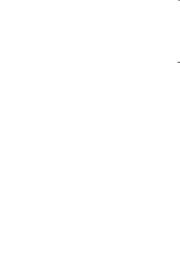
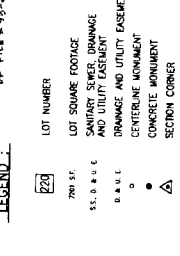
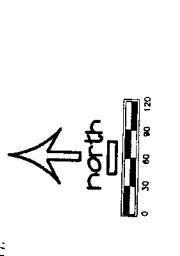
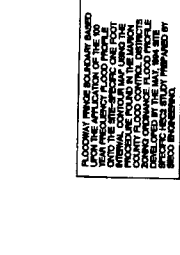
LOT LINE CURVES

CURVE	BEAM	RADIUS	LENGTH	CHORD	TANGENT	CHORD BEARING
1	17026.46'	252.00	81.75	91.83	45.99	N 87°30'54" W
2	17076.48'	252.00	81.75	91.83	45.99	N 77°49'46" W
3	17076.48'	252.00	28.08	28.08	14.04	N 79°47'28" W
4	17076.48'	252.00	81.35	81.35	40.68	N 82°50'32" W
5	17076.48'	252.00	29.07	29.07	14.54	N 89°42'02" W
6	17076.48'	252.00	81.35	81.35	40.68	N 73°16'47" W
7	17076.48'	252.00	29.07	29.07	14.54	N 84°52'25" W
8	17076.48'	252.00	81.35	81.35	40.68	N 87°30'54" W
9	17076.48'	252.00	119.87	119.87	59.93	N 77°18'46" W

This Project is based on "D" Aerial Photograph
 of the ground contours and Government
 of File # 98-2-17.

LEGEND:

- 228 7th St.
- 7th St.
- LOT SQUARE FOOTAGE
- SANITARY SEWER DRAINAGE
- 55.0 A.B.U.E.
- DRAINAGE AND UTILITY EASEMENT
- 0 CENTERLINE MONUMENT
- CONCRETE CORNER
- △ SECTION CORNER
- 221 ADDRESS

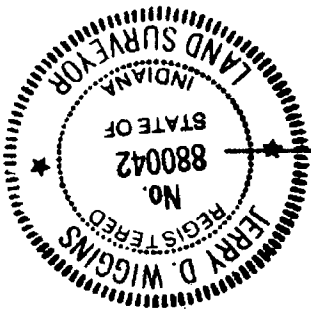


11/19/02 13:25:30 C:\WORK\PLAN\H08B17

APPROVED THIS 28th DAY OF July 2003
 PERBY TOWNSHIP ASSESSOR *John R. George*
 GIS MANAGER

APPROVAL OF CORRECTION
 METROPOLITAN DEVELOPMENT COMMISSION
 PLAT COMMITTEE
 DATE: 7/29/03
Down N
 SUBDIVISION ADMINISTRATOR

THIS INSTRUMENT PREPARED BY: J. D. WIGGINS ASSOCIATES, INC.
 19 NORTH MIDDLE STREET
 GREENWOOD, INDIANA 46143
 317-888-7878



Jerry D. Wiggins
 JERRY D. WIGGINS
 R.L.S. NO. 880042

WITNESS MY HAND AND SEAL THIS 13TH DAY OF JULY 2003.

AS SHOWN ON THE ATTACHED EXHIBIT "A", THE FEMA FLOOD ZONE AND THE HOEFGEN LEGAL DRAIN WERE OMITTED FROM THE PLAT. THE PURPOSE OF THIS CORRECTION IS TO ADD THESE ITEMS TO THE RECORDED PLAT.

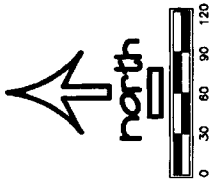
I, JERRY D. WIGGINS, HEREBY CERTIFY THAT I AM A REGISTERED LAND SURVEYOR IN THE STATE OF INDIANA, REGISTRATION NUMBER 880042, AND THAT A SCRIBENER'S ERROR OCCURRED ON THE PLAT OF KILLBUCK HILL & MURPHY'S LANDING-SECTION 8-B AS RECORDED AS INSTRUMENT NUMBER 2003-0123595 IN THE OFFICE OF THE RECORDER OF MARION COUNTY, INDIANA.

SURVEYOR'S CORRECTION
 AFFIDAVIT

STATE OF INDIANA)
) SS:)
 COUNTY OF MARION)

(8)

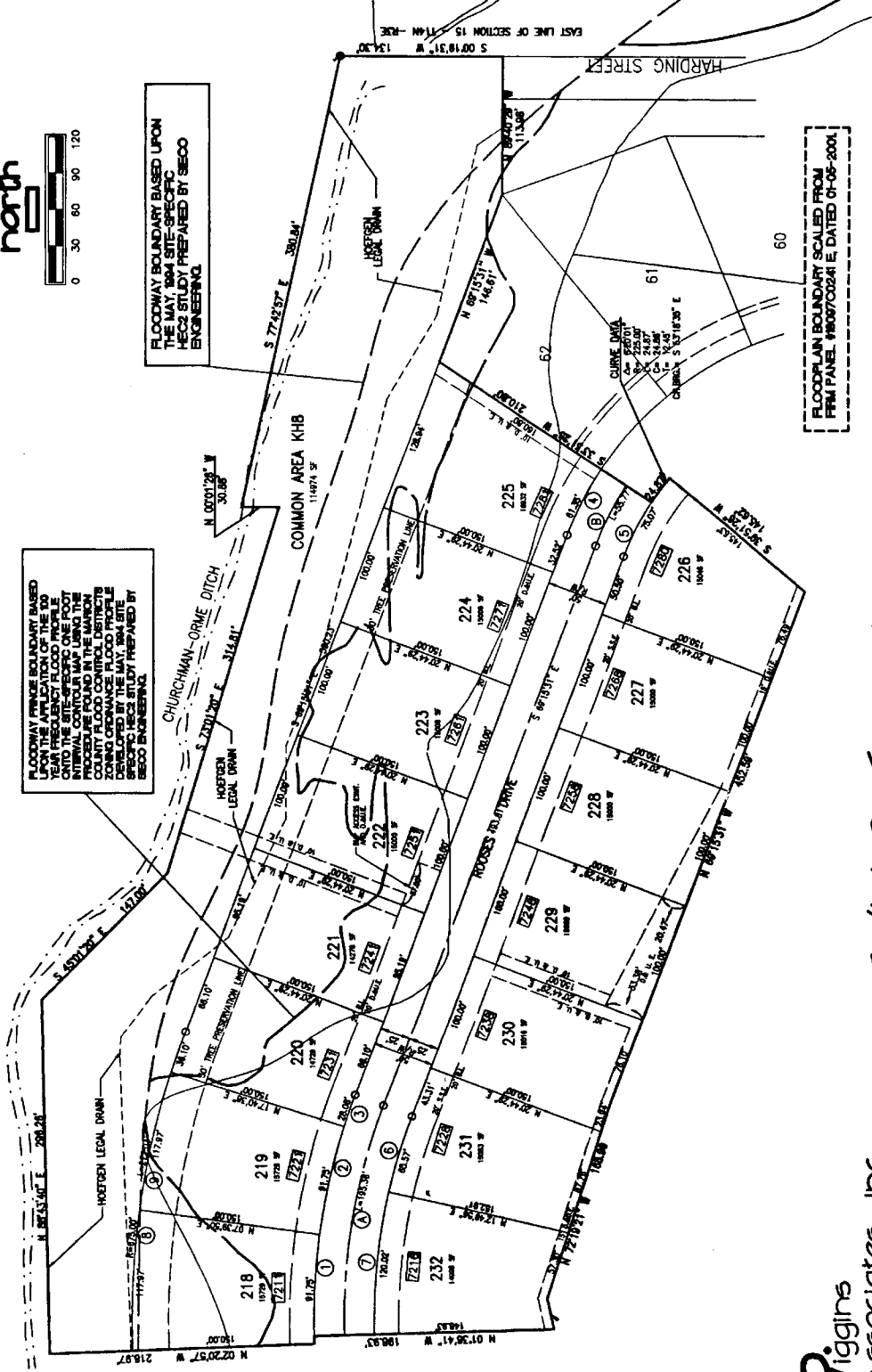
07/29/03 08:46AM WANDA MARTIN MARION CTY RECORDER
 Inst # 2003-0156302
 JDN 25.00 PAGES: 2



FLOODWAY FRINGE BOUNDARY BASED UPON THE APPLICATION OF THE 100 YEAR FREQUENCY FLOOD PROFILE INTO THE SITE-SPECIFIC ONE-FOOT DEPTH FLOODING PROCEDURES FOUND IN THE MARION COUNTY FLOOD CONTROL DISTRICT ZONING ORDINANCE FLOOD PROFILE AND BEING A SITE-SPECIFIC FLOOD PROFILE SPECIFIC HECS STUDY PREPARED BY BECO ENGINEERING.

FLOODWAY BOUNDARY BASED UPON THE MAY, 1994 SITE-SPECIFIC HECS STUDY PREPARED BY BECO ENGINEERING.

FLOODPLAIN BOUNDARY SCALED FROM FPM PANEL #809700241 E, DATED 01-05-2001.



J.P. Wiggins Associates, Inc.
 engineering...surveying...land planning
 19 north middle street
 Greenwood, Indiana 46143
 (317) 800-SURVEY

EXHIBIT "A"