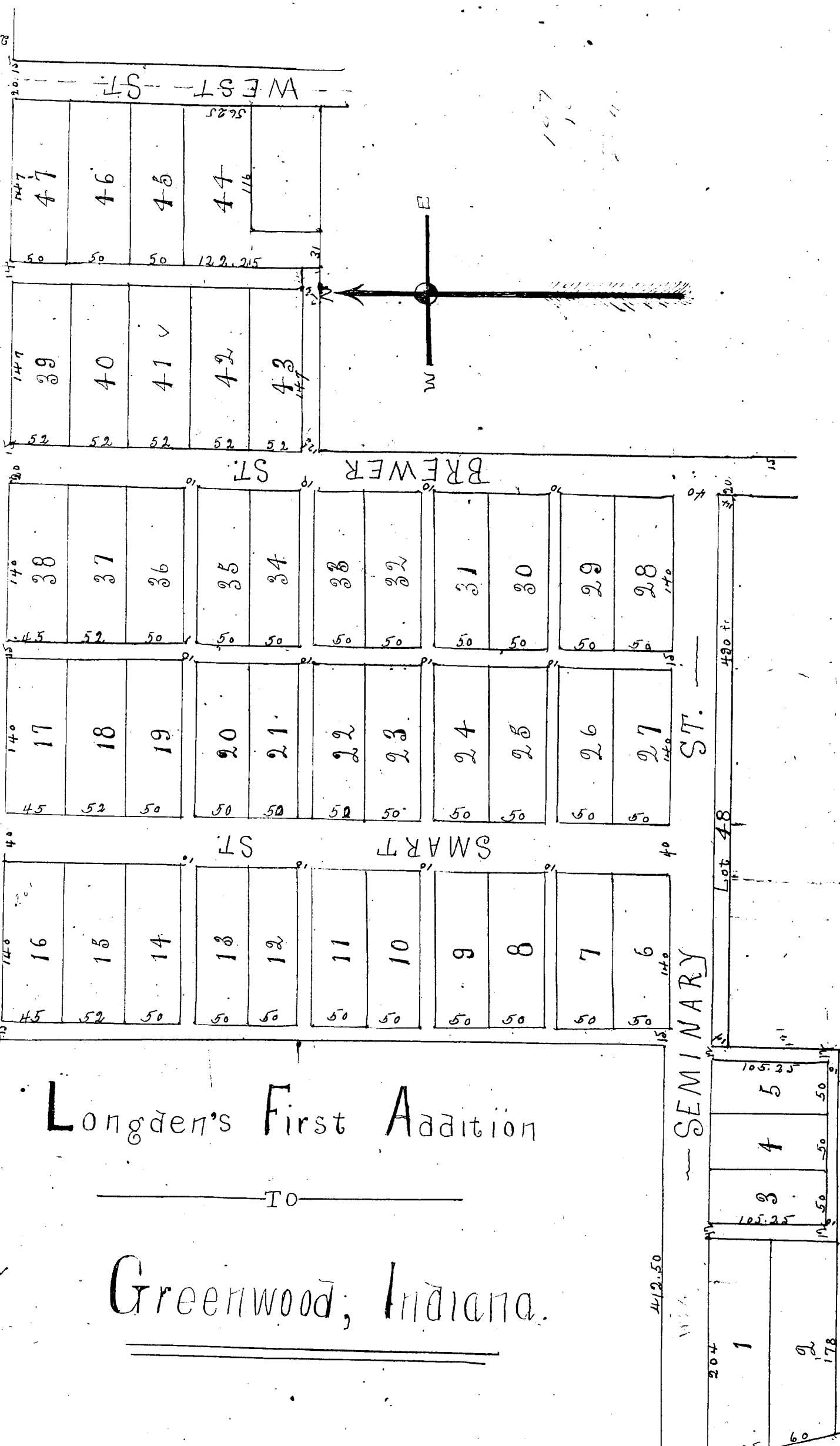


STREET

Longden's First Addition

Greenwood, Indiana.



WEST ST.

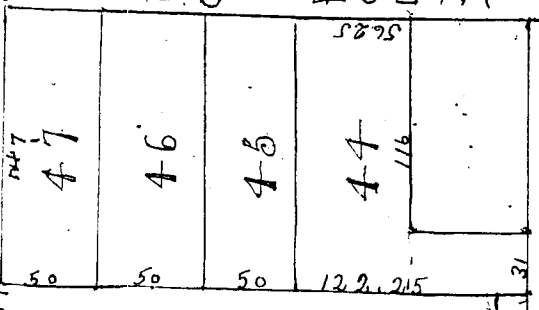
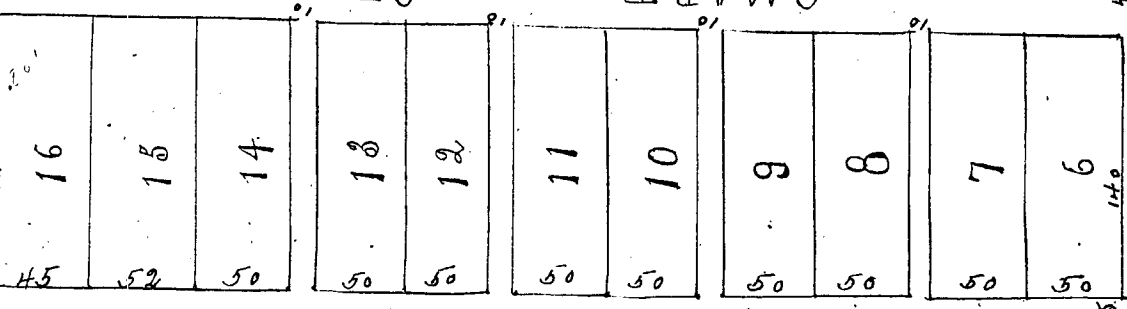
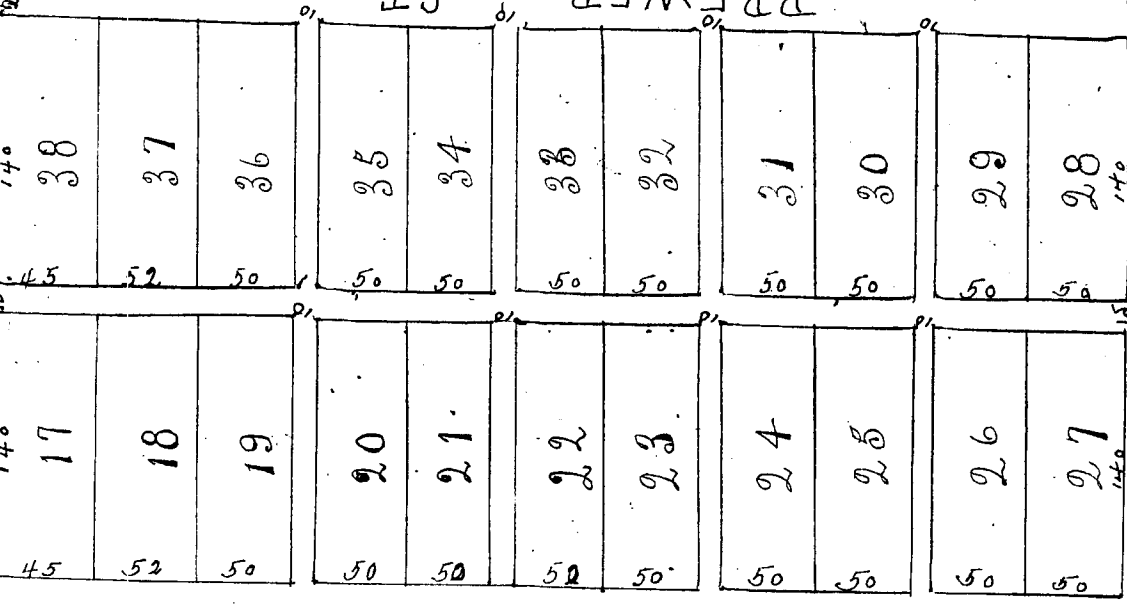
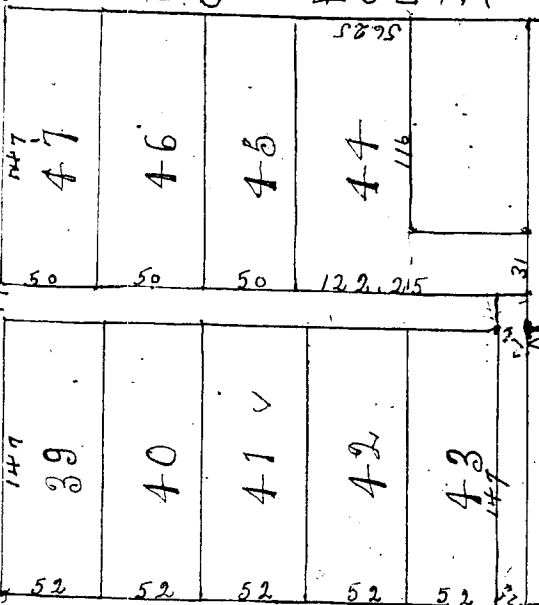
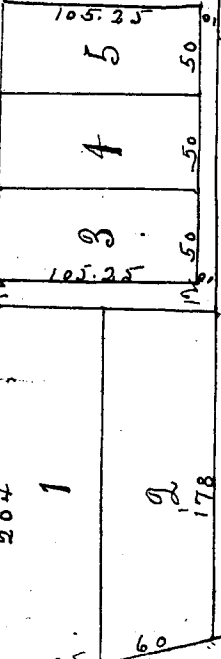
BREWSTER ST.

SMART ST.

ST.

SEMINARY

Lot 48



412.50

178

204

1

2

3

4

5

105.25

105.25

105.25

105.25

105.25

178

178

178

178

178

60

60

60

60

60

490 ft

15

15

15

15

15

15

15

15

15

15

15

15

15

15

15

15

15

15

15

15

15

15

15

15

15

15

15

15

15

15

15

15

15

15

15

15

15

15

15

15

15

15

15

15

15

15

15

15

15

15

15

15

15

15

15

15

15

15

15

15

15

15

15

15

15

15

15

15

15

15

15

15

15

15

15

15

15

15

15

15

15

15

15

15

15

15

15

15

15

15

15

15

15

15

15

15

15

15

15

15

15

15

15

15

15

15

15

15

15

15

15

15

15

15

15

15

15

15

15

15

15

15

15

15

15

15

15

15

15

15

15

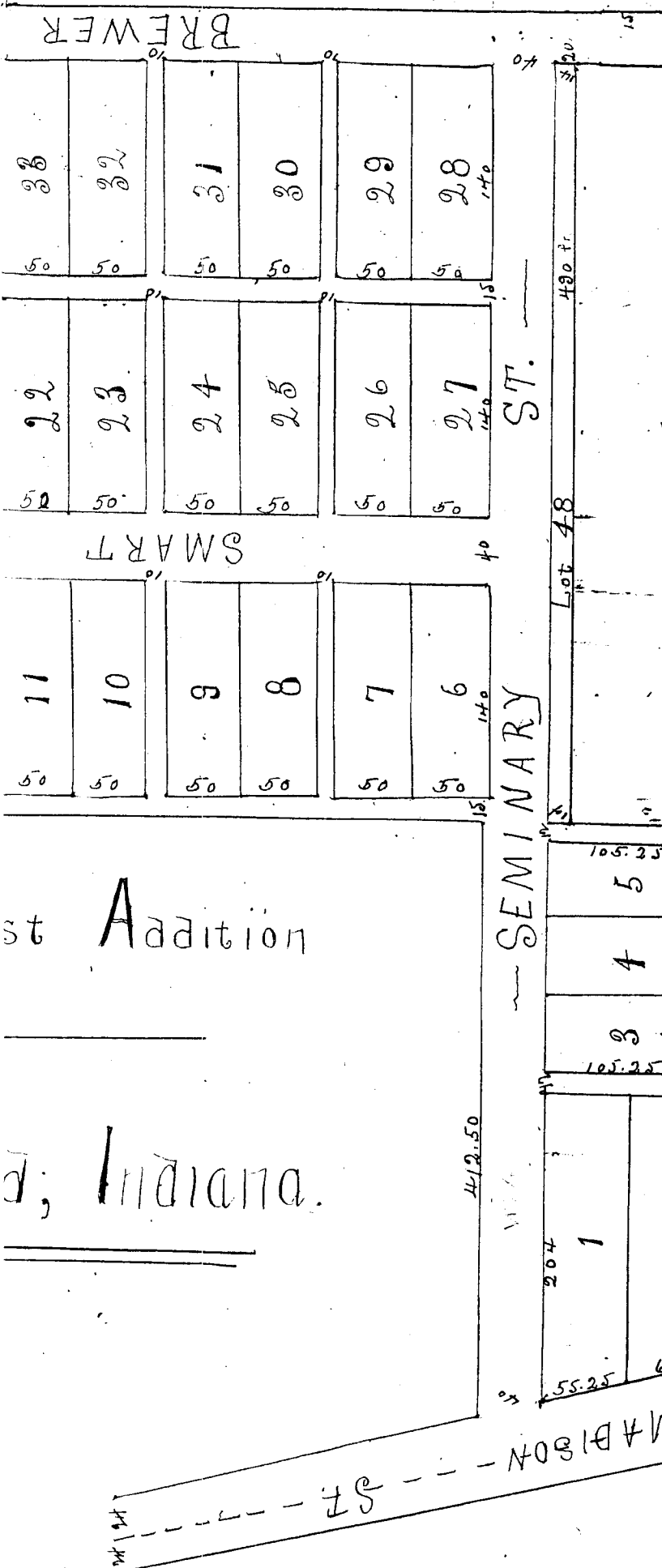
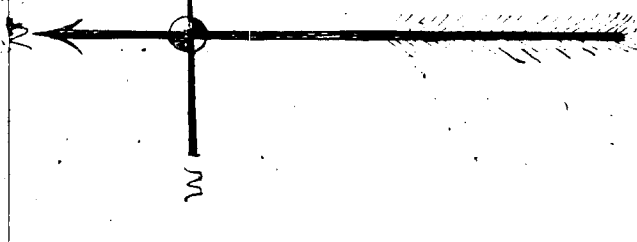
15

15

15

15

15



st Addition
 d; Indiana.

2-4-05 judgment vacating alley 2005-002865
 for location of alley see

91 A-362

Long drive Subdivision

of the following described land to wit:

Beginning at a point in the center of the north-west corner of John Smiths addition to the town of Sumner, Iowa, thence East 374 ft. thence north 105-25 ft. thence East 510 ft. thence north 377.75 ft. thence East 374 ft. thence north 272.95 ft. thence west 953 ft. thence South 596 ft. thence west 412.50 ft. to the center of the north-west corner of the plot of land owned by the firm of and designated as Long drive plot addition to the town of Sumner, Iowa. The right, title and location of the said plot addition are given on the annexed plat in full and described, the strips and alleys are hereby dedicated to public use, the same being a part of the West East Quarter of section thirty two in township fourteen north and range four East in Johnson County, Iowa.

Given, this 13th day of
 May 1900
 My hand and seal of said County

State of Iowa
 Johnson County

Witness my hand and seal of said County, on this 20th day of March 1900

met 953 ft, thence South 596 ft. thence West 412.50 ft. to the corner of Johnson's corner, ~~then~~
to the corner of Johnson's corner. These additions to the former and assignments of Johnson's first addition
to the town of Spencer's Spencerville. The rights, interests and location of lots and widths of streets ^{and} alleys
are given on the several plots in first and second, the streets and alleys are hereby dedicated to
public, the same being a part of West half of the North East Quarter of section thirty two in
Township fourteen North ^{and} range five East in Johnson's County Spencerville

Henry D. Ferguson
M. Jordan Johnson Ferguson

State of Spencerville
Johnson's County

Whereas, the undersigned, a Notary Public, in and for said County, on the 20th
day of November A.D. 1900, personally appeared Henry D. Ferguson and M. Jordan Johnson
Indorsed and with who each acknowledged the Execution of the foregoing plat,
which certifies that my commissions as Notary Public, will expire on the 12th day of January 1901.
In witness whereof, I have hereunto subscribed my name and affixed my Notarial Seal,
this 20th day of November A.D. 1900 =

H. J. Corwin Notary Public

I, Geo. W. Compton, Clerk of the town of Johnson's County, in the State of Spencerville
do hereby certify that the plat of Johnson's first addition to the town of Johnson's Spencerville, hereto
attached, was by the proprietors thereof, submitted to the Board of Trustees of said town
on the 18th day of December A.D. 1900, and that said Board of Trustees, by a special

8. Geo. W. Carpenter, Town Clerk of the town of Shrewsbury, in the State of Massachusetts do hereby certify that the plot of Longmead first addition to the town of Shrewsbury, Massachusetts attached, was, by the proprietors thereof, submitted to the Board of Selectmen of said town on the 18th day of December A. D. 1900, and that said Board of Selectmen, by a special committee appointed for that purpose, examined said plot and said plot and reported that said plot was in all things approved by said Board of Selectmen on the 18th day of December A. D. 1900 =
Witness my hand, and the corporate seal of the town of Shrewsbury, and under my hand and official, this 18th day of December A. D. One thousand nine hundred,

Geo. W. Carpenter,

Town Clerk.

Silas W. Street, Atty.

Recorded March 8 - 1902 =