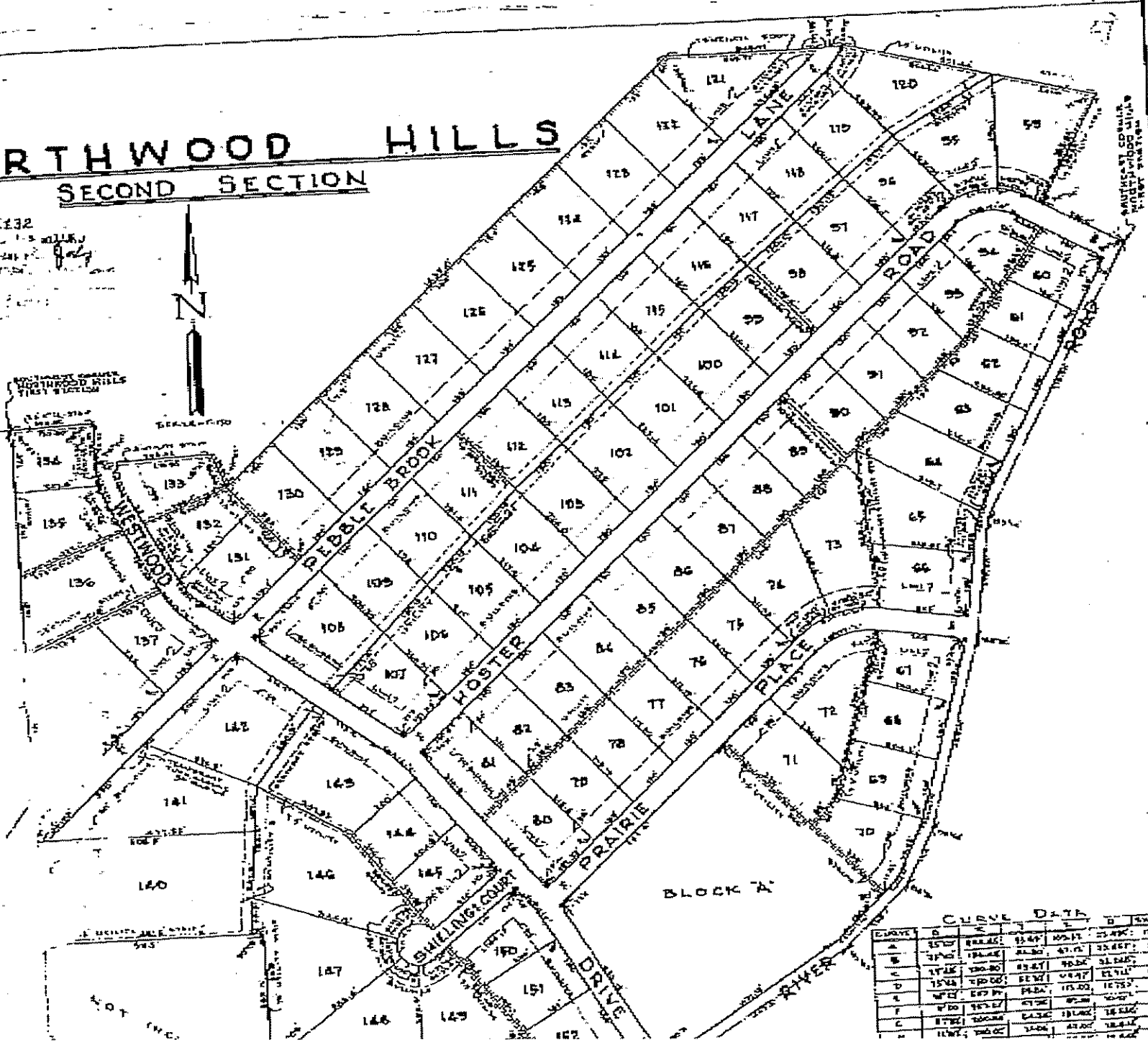


# NORTHWOOD HILLS

## SECOND SECTION

4432  
 ROSENE 1/3 MILKY  
 1/2 1/2 1/2  
 1/2 1/2 1/2  
 1/2 1/2 1/2



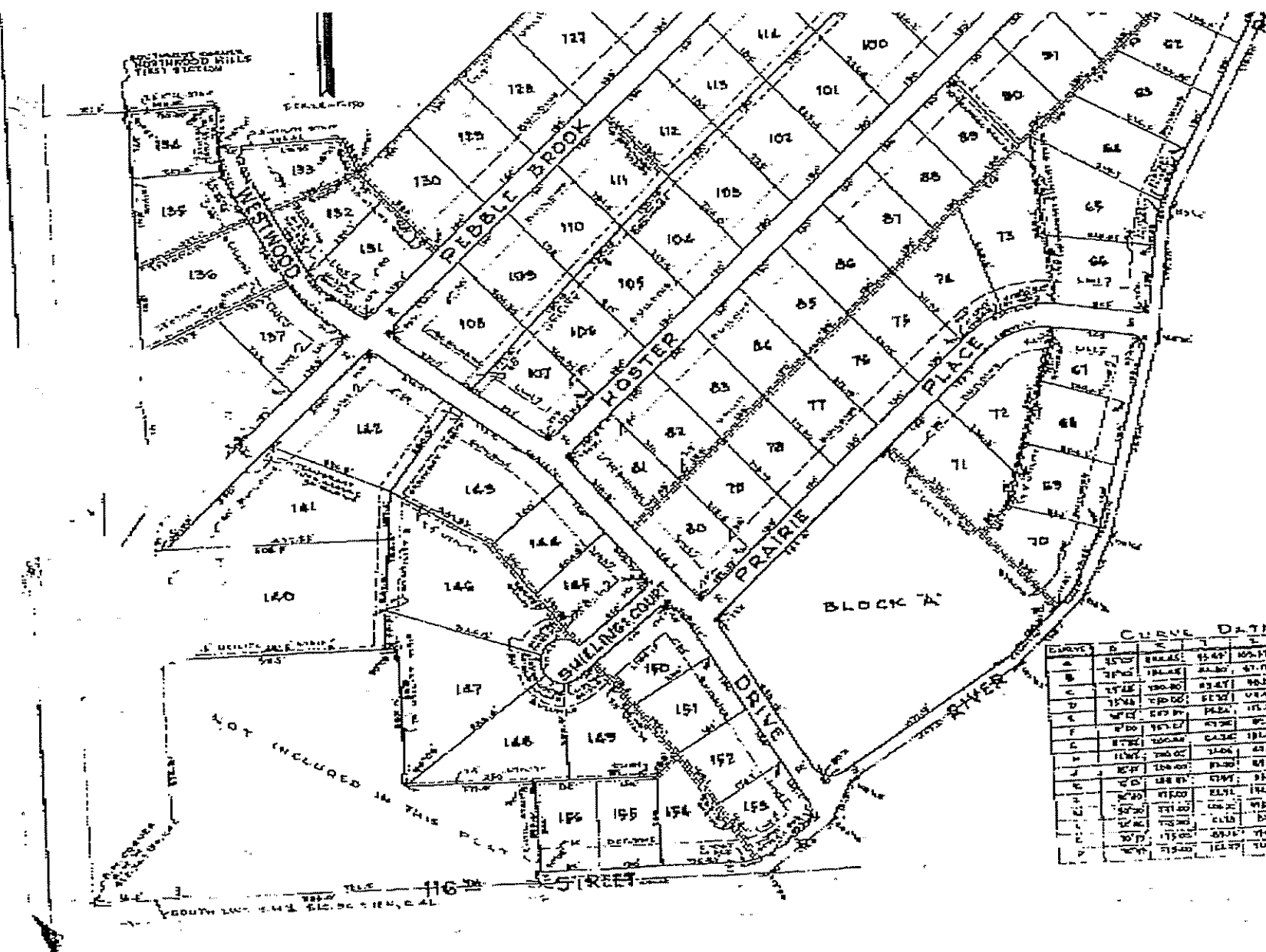
CURVE DATA

STATION	PC	PVI	PT	CHORD BEARING	CHORD DIST.	CHORD BEARING	CHORD DIST.
1+00	1+00	1+00	1+00	113.42	100.00	113.42	100.00
1+00	1+00	1+00	1+00	113.42	100.00	113.42	100.00
1+00	1+00	1+00	1+00	113.42	100.00	113.42	100.00
1+00	1+00	1+00	1+00	113.42	100.00	113.42	100.00
1+00	1+00	1+00	1+00	113.42	100.00	113.42	100.00
1+00	1+00	1+00	1+00	113.42	100.00	113.42	100.00
1+00	1+00	1+00	1+00	113.42	100.00	113.42	100.00
1+00	1+00	1+00	1+00	113.42	100.00	113.42	100.00
1+00	1+00	1+00	1+00	113.42	100.00	113.42	100.00
1+00	1+00	1+00	1+00	113.42	100.00	113.42	100.00

1/2 1/2 1/2  
 1/2 1/2 1/2  
 1/2 1/2 1/2

John ...

7/20/37  
 1000 1000  
 1000 1000



**CURVE DATA**

CURVE	B	M	CHORD	CHORD	CHORD	CHORD
A	15.00	15.00	15.00	15.00	15.00	15.00
B	15.00	15.00	15.00	15.00	15.00	15.00
C	15.00	15.00	15.00	15.00	15.00	15.00
D	15.00	15.00	15.00	15.00	15.00	15.00
E	15.00	15.00	15.00	15.00	15.00	15.00
F	15.00	15.00	15.00	15.00	15.00	15.00
G	15.00	15.00	15.00	15.00	15.00	15.00
H	15.00	15.00	15.00	15.00	15.00	15.00
I	15.00	15.00	15.00	15.00	15.00	15.00
J	15.00	15.00	15.00	15.00	15.00	15.00
K	15.00	15.00	15.00	15.00	15.00	15.00
L	15.00	15.00	15.00	15.00	15.00	15.00
M	15.00	15.00	15.00	15.00	15.00	15.00
N	15.00	15.00	15.00	15.00	15.00	15.00
O	15.00	15.00	15.00	15.00	15.00	15.00
P	15.00	15.00	15.00	15.00	15.00	15.00
Q	15.00	15.00	15.00	15.00	15.00	15.00
R	15.00	15.00	15.00	15.00	15.00	15.00
S	15.00	15.00	15.00	15.00	15.00	15.00
T	15.00	15.00	15.00	15.00	15.00	15.00
U	15.00	15.00	15.00	15.00	15.00	15.00
V	15.00	15.00	15.00	15.00	15.00	15.00
W	15.00	15.00	15.00	15.00	15.00	15.00
X	15.00	15.00	15.00	15.00	15.00	15.00
Y	15.00	15.00	15.00	15.00	15.00	15.00
Z	15.00	15.00	15.00	15.00	15.00	15.00

1000 1000  
 1000 1000



It is the wish of the County of Health, to amend the existing health ordinance, Chapter 15, Section 15.01, to provide for the regulation of the use of land in the City of Health, Oregon, to the extent that the same shall be necessary for the health, safety and general welfare of the community.

The purpose of the ordinance is to provide for the regulation of the use of land in the City of Health, Oregon, to the extent that the same shall be necessary for the health, safety and general welfare of the community.

The ordinance is intended to be construed liberally to effectuate its purpose, and to be applied to all cases not specifically covered by its provisions.

The ordinance is intended to be construed liberally to effectuate its purpose, and to be applied to all cases not specifically covered by its provisions.

The ordinance is intended to be construed liberally to effectuate its purpose, and to be applied to all cases not specifically covered by its provisions.



*Charles E. ...*  
 Mayor

Approved under the laws of the State of Oregon, this 15th day of May, 1956.

Witness our signatures and corporate seal this 15th day of May, 1956.

*Robert H. ...*  
 Mayor

County of Health,  
 State of Oregon.

Whereas, the undersigned, a duly qualified elector of the County of Health, Oregon, do hereby certify that the following ordinance is a valid and lawful ordinance of the County of Health, Oregon, and that the same has been duly adopted and passed by the Board of Health, Oregon, and that the same is now in full force and effect.

Witness my hand and seal this 15th day of May, 1956.

By Commission Expires, DECEMBER 3, 1957.

*Robert H. ...*  
 County Clerk

Under authority provided by Chapter 15, Section 15.01, of the County of Health, Oregon, and all other applicable laws, and ordinances adopted by the Board of Health, Oregon, this ordinance is hereby published for the information of the public.

Approved by County Plan Commission at a meeting held on the 15th day of May, 1956.

Under authority provided by Chapter 15, Section 15.01, of the County of Health, Oregon, and all other applicable laws, and ordinances adopted by the Board of Health, Oregon, this ordinance is hereby published for the information of the public.

Approved by County Commission at a meeting held on the 15th day of May, 1956.

*Robert H. ...*  
 County Clerk

*Robert H. ...*  
 County Clerk

*Robert H. ...*  
 County Clerk

*Robert H. ...*  
 County Clerk

*Robert H. ...*  
 County Clerk

*Robert H. ...*  
 County Clerk

*Robert H. ...*  
 County Clerk

*Robert H. ...*  
 County Clerk

*Robert H. ...*  
 County Clerk

*Robert H. ...*  
 County Clerk