

STOP 8 ROAD

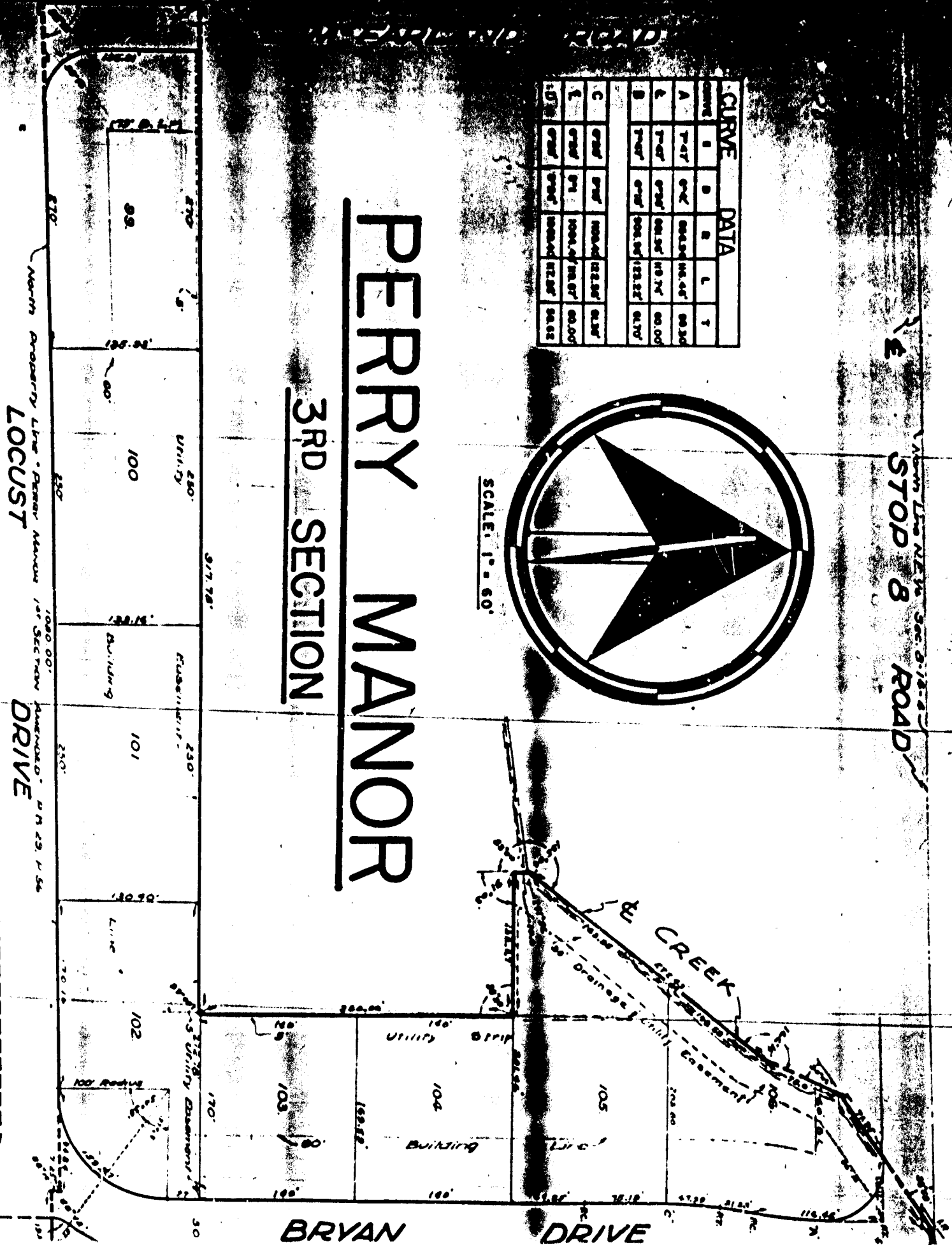
CURVE		DATA			
NAME	B	R	L	T	
A	74°17'	674.0'	104.47'	68.30'	
B	74°17'	674.0'	104.47'	68.30'	
C	67°45'	1004.47'	104.47'	68.30'	
D	67°45'	1004.47'	104.47'	68.30'	



SCALE: 1" = 60'

PERRY MANOR

3RD SECTION



... of the above mentioned party, hereby certify that they do hereby for the said party and witnesses...

Ernest D. Burdick
Ernest D. Burdick
State of Indiana



The undersigned, being duly sworn, depose and say that the above and foregoing is a true and correct copy of the original of the same as the same was presented to the undersigned by the said party and witnesses...

Albie W. Logan
ALBIE W. LOGAN

WITNESSES OUR SIGNATURES THIS 12 DAY OF
PERCY MANOR, INC.

1956
Burnice D. Brock
BURNICE D. BROCK

APPROVED THE 12th DAY OF
OCTOBER 1956
COUNTY PLAIN COMM. SSM

COUNTY OF MARION }
STATE OF INDIANA }

Witness My Signature and Notarial Seal This Day Of
1956

Notary Public

The undersigned, being duly sworn, depose and say that the above and foregoing is a true and correct copy of the original of the same as the same was presented to the undersigned by the said party and witnesses...