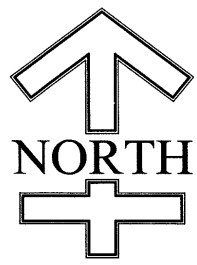
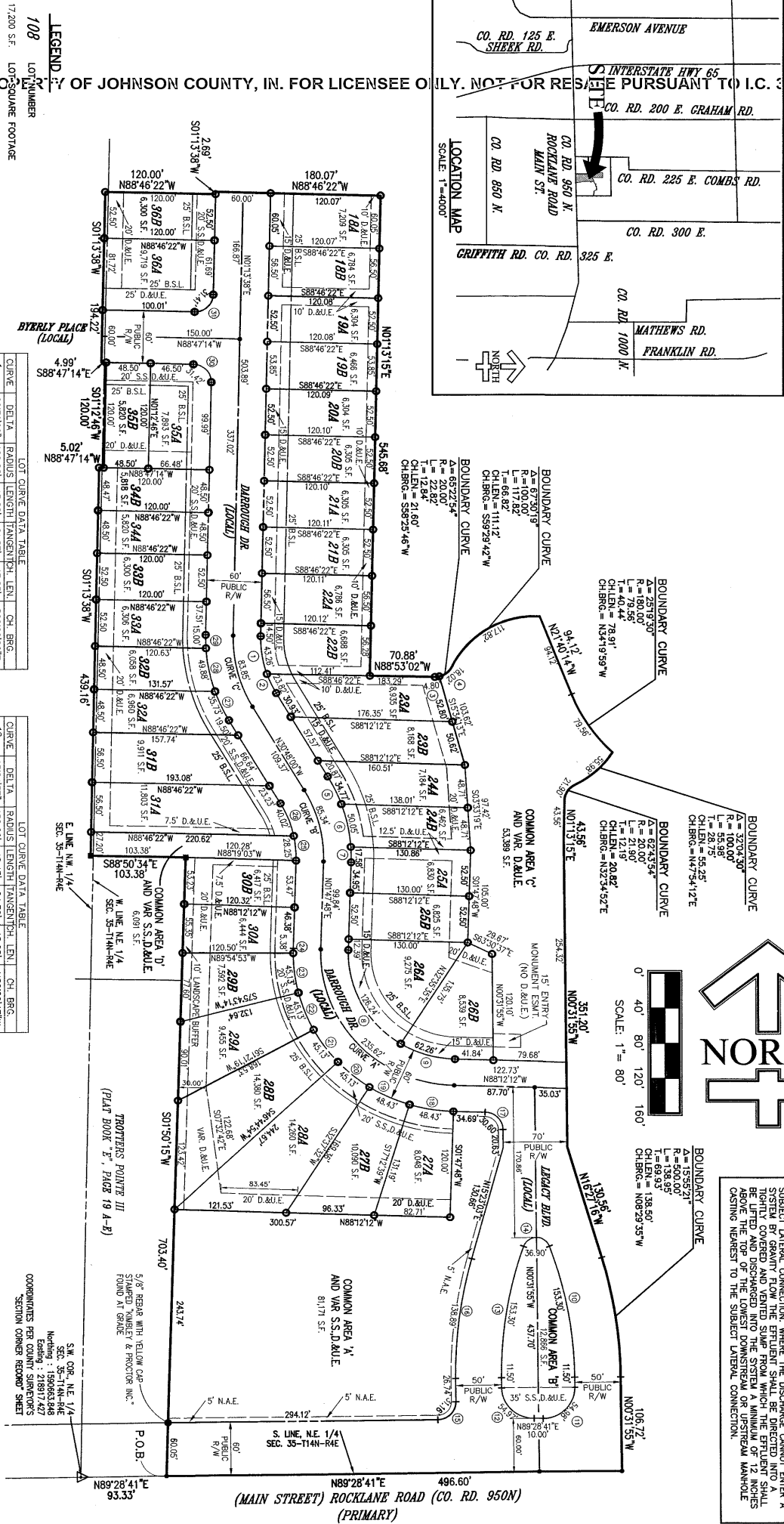
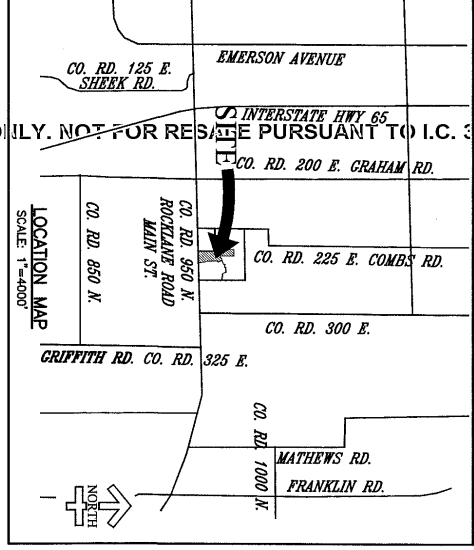


FINAL PLAT

THE RESERVE AT ROCKLANE RIDGE - SECTION ONE

CITY OF GREENWOOD, JOHNSON COUNTY, INDIANA

ZONING: C-1



WHERE SANITARY DISCHARGE CAN ENTER INTO A PUBLIC OR PRIVATE SANITARY SEWER SYSTEM BY GRAVITY FLOW, THE LOWEST FLOOR ELEVATION WHERE A PLUMBING FIXTURE OR FLOOR DRAIN IS INSTALLED MUST BE A MINIMUM OF 12 INCHES ABOVE THE TOP OF THE LOWEST DOWNSTREAM OR UPSTREAM MANHOLE. SANITARY DISCHARGE INTO A SYSTEM BY GRAVITY FLOW THE EFFLUENT SHALL BE DIRECTED INTO A TIGHTLY COVERED AND VENTED STUMP FROM WHICH THE EFFLUENT SHALL BE LIFTED AND DISCHARGED INTO THE SYSTEM AT A MINIMUM OF 12 INCHES ABOVE THE TOP OF THE LOWEST DOWNSTREAM OR UPSTREAM MANHOLE. (ASING NEAREST TO THE SUBJECT LATERAL CONNECTION.)

LEGEND

- 1/8" LOT NUMBER
- 17,200 S.F. LOT SQUARE FOOTAGE
- S.S.D.&U.E. SANITARY SEWER, DRAINAGE AND UTILITY EASEMENT
- D.&U.E. DRAINAGE AND UTILITY EASEMENT
- B.S.L. BUILDING SETBACK LINE
- R/W RIGHT-OF-WAY
- N.A.E. NO ACCESS EASEMENT
- LOT CURVE DATA
- CENTERLINE CURVE DATA
- CENTERLINE CURVE DATA
- 5/8" DIA REBAR WITH CAP STAMPED "PROJECTS PLUS 0029"
- SECTION CORNER
- CONCRETE MONUMENT

LOT CURVE DATA TABLE

CURVE	DELTA	RADIUS	LENGTH	TANGENT	LEN.	CH. BRG.
1	203.97°	120.00'	43.96'	21.87'	43.63'	S89°00'32"E
2	112.21°	120.00'	32.82'	11.95'	23.38'	S29°00'55"E
3	134.81°	20.00'	4.86'	2.41'	4.79'	N84°14'47"E
4	51.37°	20.00'	18.02'	9.67'	17.42'	N51°30'10"E
5	110.03°	180.00'	50.05'	24.77'	34.72'	S25°13'56"E
6	155.55°	180.00'	50.05'	25.19'	49.89'	N11°45'55"E
7	05.55°	180.00'	17.58'	8.80'	17.57'	S01°00'06"E
8	60.15°	120.00'	126.22'	69.67'	110.50'	S23°20'27"E
9	29.43°	120.00'	62.26'	31.85'	62.26'	S72°20'27"E
10	19.31°	450.00'	153.50'	77.40'	152.56'	N01°17'28"W
11	90.00°	35.00'	54.98'	35.01'	49.50'	N44°29'33"E
12	89.59°	35.00'	54.97'	34.99'	49.49'	N45°31'37"W
13	119.31°	450.00'	153.50'	77.40'	152.56'	N09°13'46"E
14	140.57°	15.00'	35.90'	42.31'	28.28'	N89°25'05"E
15	89.15°	20.00'	31.16'	19.74'	28.10'	N44°50'53"E
16	15.54°	500.00'	158.89'	69.90'	138.45'	N07°25'34"E
17	87.40°	20.00'	30.60'	19.20'	27.70'	N44°22'04"W

LOT CURVE DATA TABLE

CURVE	DELTA	RADIUS	LENGTH	TANGENT	LEN.	CH. BRG.
18	152.45°	180.00'	48.43'	24.56'	48.28'	N80°29'42"W
19	152.45°	180.00'	48.43'	24.56'	48.28'	N80°30'45"W
20	142.15°	180.00'	45.13'	22.66'	45.01'	N65°01'32"E
21	142.15°	180.00'	45.13'	22.66'	45.01'	N65°01'38"E
22	142.15°	180.00'	45.13'	22.66'	45.01'	N62°27'44"W
23	142.15°	180.00'	45.13'	22.66'	45.01'	N07°05'50"E
24	101°42'44"	180.00'	5.38'	2.66'	5.38'	N00°56'27"E
25	132.22°	120.00'	14.19'	28.19'	14.19'	N04°56'55"W
26	130.62°	120.00'	40.02'	20.20'	39.63'	N21°14'48"W
27	112.22°	180.00'	35.73'	17.92'	35.67'	N26°06'46"W
28	155.23°	180.00'	49.89'	25.10'	49.72'	N11°29'15"W
29	4.66°	180.00'	15.00'	7.51'	15.00'	N42°46'48"W
30	90.00°	52.00'	20.00'	31.42'	28.82'	N42°46'48"W
31	89.59°	20.00'	31.41'	19.99'	28.28'	N46°13'12"E

CENTERLINE CURVE DATA TABLE

CURVE	DELTA	RADIUS	LENGTH	TANGENT	LEN.	CH. BRG.
A	90°00'00"	150.00'	235.62'	121.21'	N43°12'12"W	
B	32°35'42"	150.00'	85.34'	43.86'	N4°19'30"E	
C	32°01'38"	150.00'	83.95'	43.05'	N14°47'11"W	

NOTE:
5/8" DIAMETER X 24" LONG REBAR WITH YELLOW PLASTIC CAPS STAMPED "PROJECTS PLUS 0029" WILL BE SET AT ALL LOT CORNERS AND CROSS REFERENCED TO THIS FINAL PLAT BY A RECORDED "PROJECTS PLUS 0029" INDIANA ADMINISTRATIVE CODE (685 IAC 1-12-8).

COORDINATES PER CORNER RECORD SHEET

S.W. COR. NE 1/4 SEC. 35-114H-4E
Nothing is shown Easting: 218917.427
Nothing is shown Northing: 1980663.848

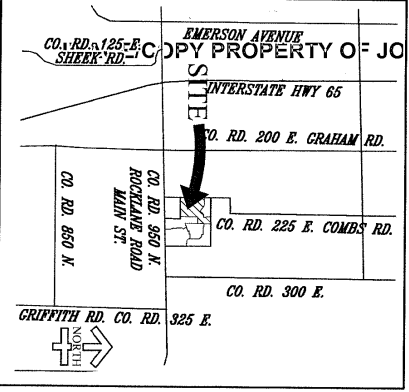
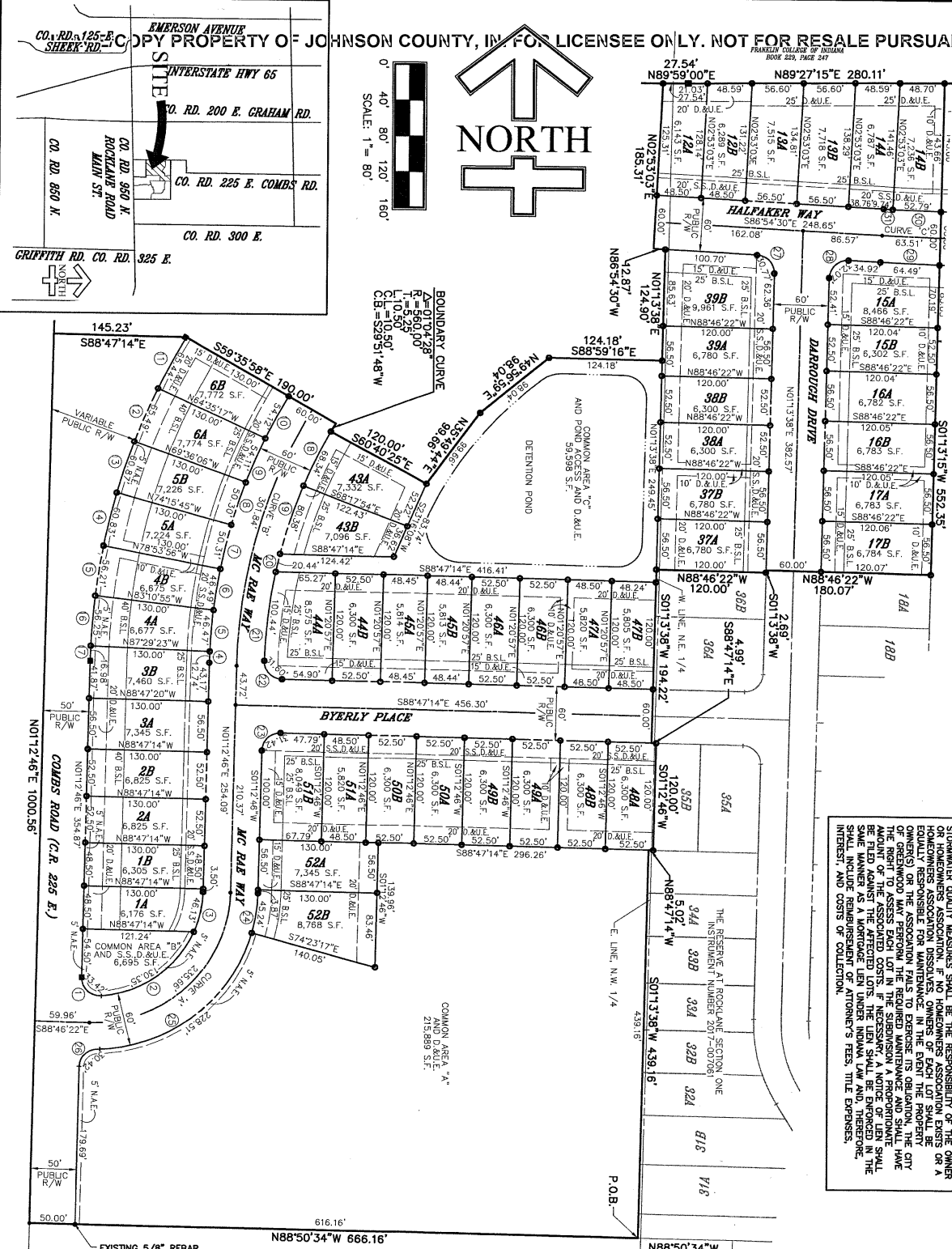
FINAL PLAT

THE RESERVE AT ROCKLANE RIDGE - SECTION TWO

CITY OF GREENWOOD, JOHNSON COUNTY, INDIANA

ZONING: C-1

STORM SEWERS AND THE DRAINS 12-INCH OR LARGER WITHIN DESIGNATED DRAIN AREAS ARE THE EXTENSION OF THE CITY DRAINAGE SYSTEM AND ARE THE RESPONSIBILITY OF THE CITY. DRAINAGE SWALES, DETENTION AND RETENTION PONDS, AND POST CONSTRUCTION CONSTRUCTION SHALL BE THE RESPONSIBILITY OF THE OWNER. HOMEOWNERS ASSOCIATION DISSOLVES, OWNERS OF EACH LOT SHALL BE EQUALLY RESPONSIBLE FOR MAINTENANCE IN THE EVENT THE PROPERTY OWNER(S) OF THE ASSOCIATION FAILS TO EXERCISE ITS OBLIGATION. THE CITY AMOUNT OF THE ASSOCIATED COSTS. IF NECESSARY, A NOTICE OF LIEN SHALL BE FILED AGAINST THE AFFECTED LOTS. THE LIEN SHALL BE ENFORCED IN THE SHALL INCLUDE REIMBURSEMENT OF ATTORNEY'S FEES, TITLE EXPENSES, INTEREST, AND COSTS OF COLLECTION.



LOT NUMBER	LOT SQUARE FOOTAGE	SPANNING SEWER, DRAINAGE AND UTILITY EASEMENT	DRAINAGE AND UTILITY EASEMENT	BUILDING SETBACK LINE	R/W	RIGHT-OF-WAY	NO ACCESS EASEMENT	LOT CURVE DATA	CURVE DATA	CURVE DATA	CH. MARK	CH. MARK
1A	130.00											
1B	130.00											
2A	130.00											
2B	130.00											
3A	130.00											
3B	130.00											
4A	130.00											
4B	130.00											
5A	130.00											
5B	130.00											
6A	130.00											
6B	130.00											
7A	130.00											
7B	130.00											
8A	130.00											
8B	130.00											
9A	130.00											
9B	130.00											
10A	130.00											
10B	130.00											
11A	130.00											
11B	130.00											
12A	130.00											
12B	130.00											
13A	130.00											
13B	130.00											
14A	130.00											
14B	130.00											
15A	130.00											
15B	130.00											
16A	130.00											
16B	130.00											
17A	130.00											
17B	130.00											
18A	130.00											
18B	130.00											
19A	130.00											
19B	130.00											
20A	130.00											
20B	130.00											
21A	130.00											
21B	130.00											
22A	130.00											
22B	130.00											
23A	130.00											
23B	130.00											
24A	130.00											
24B	130.00											
25A	130.00											
25B	130.00											
26A	130.00											
26B	130.00											
27A	130.00											
27B	130.00											
28A	130.00											
28B	130.00											
29A	130.00											
29B	130.00											
30A	130.00											
30B	130.00											
31A	130.00											
31B	130.00											
32A	130.00											
32B	130.00											
33A	130.00											
33B	130.00											
34A	130.00											
34B	130.00											
35A	130.00											
35B	130.00											
36A	130.00											
36B	130.00											
37A	130.00											
37B	130.00											
38A	130.00											
38B	130.00											
39A	130.00											
39B	130.00											
40A	130.00											
40B	130.00											
41A	130.00											
41B	130.00											
42A	130.00											
42B	130.00											
43A	130.00											
43B	130.00											
44A	130.00											
44B	130.00											
45A	130.00											
45B	130.00											
46A	130.00											
46B	130.00											
47A	130.00											
47B	130.00											
48A	130.00											
48B	130.00											
49A	130.00											
49B	130.00											
50A	130.00											
50B	130.00											
51A	130.00											
51B	130.00											
52A	130.00											
52B	130.00											

WHERE SANITARY DISCHARGE CAN ENTER INTO A PUBLIC OR PRIVATE SANITARY SEWER SYSTEM BY GRAVITY FLOW, FUTURE OR FLOOR DRAIN IS INSTALLED MUST BE A MINIMUM OF 12 INCHES ABOVE THE TOP OF THE LOWEST DOWNSTREAM FOR UPSTREAM MANHOLE CASTING NEAREST DISCHARGE POINT. DISCHARGE SHALL BE DIRECTED INTO A TIGHTLY FITTED AND VENTED SUMP FROM WHICH THE EFFLUENT FLOW FROM THE SUMP SHALL BE DIRECTED INTO THE LOWEST MANHOLE OF 12 INCHES ABOVE THE TOP OF THE LOWEST DOWNSTREAM OR UPSTREAM MANHOLE CASTING NEAREST TO THE SUBJECT LATERAL CONNECTION.

S.W. COR. NE 1/4
SEC. 35, T14N, R4E
Northing: 1590663.948
Easting: 218971.627
COORDINATES PER COUNTY SURVEY RECORD SHEET

- ▲ SECTION CORNER
- CONCRETE MONUMENT INSTALLED PER GREENWOOD MUNICIPAL CODE
- 5/8" x 24" REBAR WITH CAP
- STAMPED "PROJECTS PLUS 0028"

LEGEND:

FINAL PLAT

THE RESERVE AT ROCKLANE RIDGE - SECTION THREE

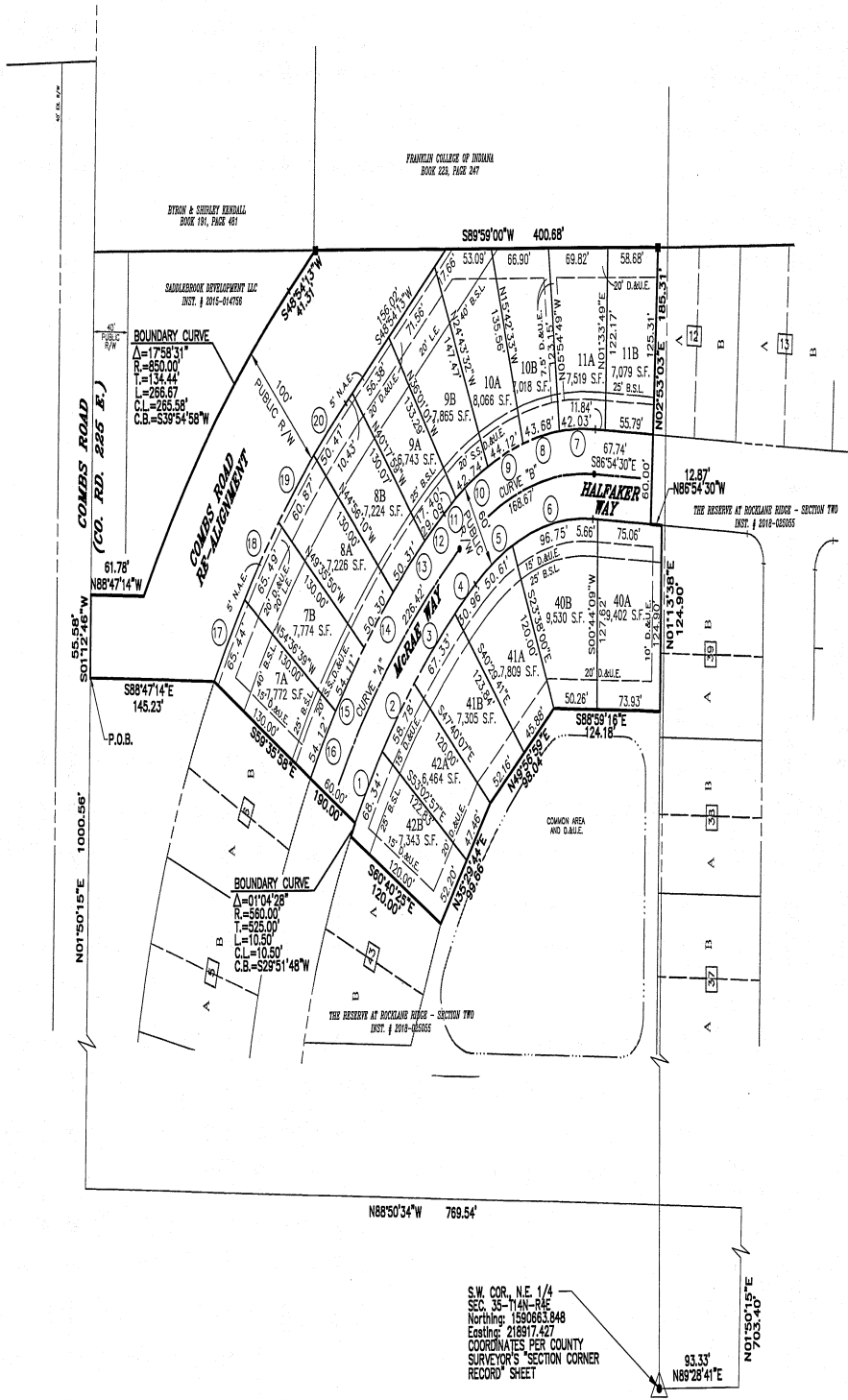
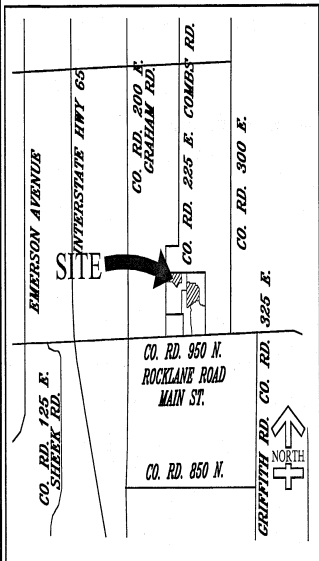
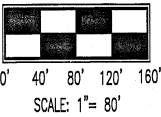
CITY OF GREENWOOD, JOHNSON COUNTY, INDIANA

ZONING: C-1

LEGEND :

- 8A LOT NUMBER
- 17,200 S.F. LOT SQUARE FOOTAGE
- S.S., D.&U.E. SANITARY SEWER, DRAINAGE AND UTILITY EASEMENT
- D.&U.E. DRAINAGE AND UTILITY EASEMENT
- B.S.L. BUILDING SETBACK LINE
- R/W RIGHT-OF-WAY
- N.A.E. NO ACCESS EASEMENT
- 1 LOT CURVE DATA
- CURVE 'A' CENTERLINE CURVE DATA
 - CENTERLINE MONUMENT
 - 5/8" x 24" REBAR WITH CAP STAMPED "PROJECTS PLUS 0029"
 - △ SECTION CORNER
 - CONCRETE MONUMENT

WHERE SANITARY DISCHARGE CAN ENTER INTO A PUBLIC OR PRIVATE SANITARY SEWER SYSTEM BY GRAVITY FLOW, THE LOWEST FLOOR ELEVATION WHERE A PLUMBING FIXTURE OR FLOOR DRAIN IS INSTALLED MUST BE A MINIMUM OF 12 INCHES ABOVE THE TOP OF THE LOWEST DOWNSTREAM OR UPSTREAM MANHOLE CASTING NEAREST TO THE SUBJECT LATERAL CONNECTION. WHERE THE DISCHARGE CANNOT ENTER A SYSTEM BY GRAVITY FLOW THE EFFLUENT SHALL BE DIRECTED INTO A TIGHTLY COVERED AND VENTED SUMP FROM WHICH THE EFFLUENT SHALL BE LIFTED AND DISCHARGED INTO THE SYSTEM A MINIMUM OF 12 INCHES ABOVE THE TOP OF THE LOWEST DOWNSTREAM OR UPSTREAM MANHOLE CASTING NEAREST TO THE SUBJECT LATERAL CONNECTION.



2019-018758
 RECORDED ON
 08/26/2019 02:30:55 PM
 TERESA K. PETRO
 JOHNSON COUNTY RECORDER
 REC FEE: 30.00
 PAGE: 1

LOT CURVE DATA TABLE						
CURVE DELTA	RADIUS	LENGTH	TANGENT	CH. LEN.	CH. BRG.	
1	6'59"29.95'	560.00'	68.34'	34.21'	68.29'	N32°49'20"E
2	6'00"48.81'	560.00'	56.78'	29.41'	56.75'	N39°19'20"E
3	6'53"18.19'	560.00'	67.33'	33.70'	67.29'	N45°46'33"E
4	3'10"04.82'	560.00'	30.96'	15.49'	30.96'	N50°48'15"E
5	1'35"58.42.19'	207.43'	50.61'	25.43'	50.48'	N59°22'38"E
6	26°43'30.06"	207.43'	96.75'	49.27'	95.88'	N79°43'45"E
7	9°00'18.62"	267.43'	42.03'	21.06'	41.99'	N88°35'20"E
8	9°21'12.87"	267.43'	44.12'	22.11'	44.07'	S70°00'04"W
9	9°09'28.34"	267.43'	42.74'	21.42'	42.70'	N60°41'43"E
10	3°43'41.95"	267.43'	17.40'	8.70'	17.40'	S54°15'08"W
11	2°41'16.68"	620.00'	29.09'	14.55'	29.08'	S51°02'39"W
12	4°38'57.80"	620.00'	50.31'	25.17'	50.30'	S47°22'32"W
13	4°38'52.47"	620.00'	50.30'	25.16'	50.28'	S47°23'37"W
14	5°00'01.84"	620.00'	54.11'	27.07'	54.09'	S37°54'09"W
15	5°00'06.28"	620.00'	54.12'	27.08'	54.11'	N32°54'05"E
16	4°59'58.11"	750.00'	65.44'	32.74'	65.42'	S32°54'01"W
17	4°59'58.11"	750.00'	65.44'	32.74'	65.42'	S32°54'01"W
18	4°39'00.64"	750.00'	60.87'	30.45'	60.85'	N42°43'41"E
19	3°51'02.46"	750.00'	50.41'	25.21'	50.40'	N46°58'42"E
20						

CENTERLINE CURVE DATA TABLE						
CURVE DELTA	RADIUS	LENGTH	TANGENT	CH. LEN.	CH. BRG.	
A	21°59'17"	590.00'	226.42'	114.62'	225.03'	N41°23'40"E
B	40°42'10"	237.43'	168.67'	88.07'	165.14'	N72°44'23"E

S.W. COR., N.E. 1/4
 SEC. 35 - T14N - R4E
 Northing: 1590855.848
 Easting: 218917.427
 COORDINATES PER COUNTY
 SURVEYOR'S SECTION CORNER
 RECORD SHEET

