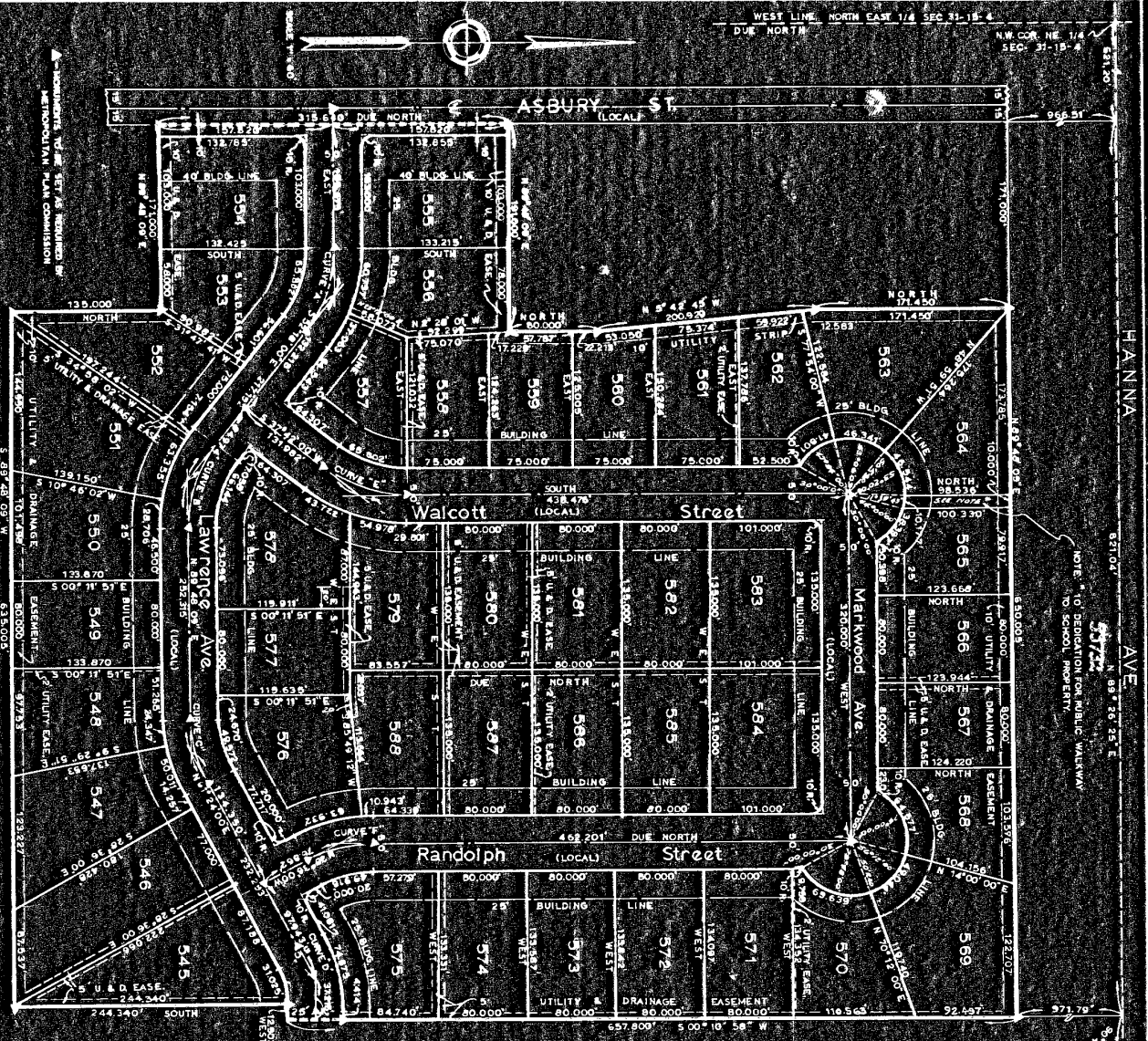




IMAGE COPY

Vol 32 - P 393



**ROSEDALE HILLS - SECTION IX**

The undersigned, owners of the above described real estate, hereby certify that they do lay off, plat and subdivide the same in accordance with this plat and certificate. This subdivision shall be known and designated as **ROSEDALE HILLS - SECTION IX**, an addition to the City of Indianapolis, Indiana. The streets, if not heretofore dedicated, are hereby dedicated to the public. There are strips of ground 2.50 feet in width, as shown on this plat and marked 'Utility Strips', which are hereby reserved for the use of public utilities, not including electric, gas, water, sewer, telephone, cable television, or other utility lines, and to the extent of the easements shown thereon. The size of lots and the location of streets as shown on this plat, by figures denoting feet & decimal parts thereof.

**CERTIFICATE OF SURVEY**

I, the undersigned, hereby certify this plat to be true and correct, representing a subdivision of part of the Northwest quarter of Section 31, Township 15 North, Range 4 East, in Marion County, State of Indiana, more particularly described as follows:

Commencing at the Northwest corner of the aforementioned quarter section; running thence North 89° 26' 25" East; on and along the north line thereof a distance of 521.20 feet; running thence due South parallel to the west line thereof a distance of 966.51 feet; running thence North 89° 48' 09" East a distance of 17,000 feet to the point of beginning of the real estate described; hereinafter continuing thence along the same line a distance of 650,005 feet; running thence South 89° 48' 09" West a distance of 171,450 feet; running thence due North a distance of 171,000 feet; running thence due North a distance of 3,151,640 feet; running thence North 89° 48' 09" East a distance of 191,000 feet; running thence due North a distance of 600 feet; running thence North 5° 42' 49" West a distance of 2009.29 feet; running thence due North a distance of 171,450 feet to the point of beginning; containing in all 74,533 acres, subject however to any legal highways, rights-of-way, and easements.

This subdivision consists of 44 lots numbered from 545 to 588 inclusive with streets as shown hereon. The size of lots & width of streets are shown on this plat, by figures denoting feet & decimal parts thereof.

Confirmed this 14th Day of September, 1939

**MID STATES ENGINEERING CO., INC.**

*M. J. ...*

CURVE	D	R	Δ	Δ
A	38,197.2	150,000	99,700	51,210
B	48,856.6	125,000	82,243	45,895
C	57,283.8	100,000	68,802	38,433
D	63,917.2	75,000	57,284	31,257
E	68,856.6	50,000	48,857	25,206
F	74,871.7	25,000	41,517	21,206

1939