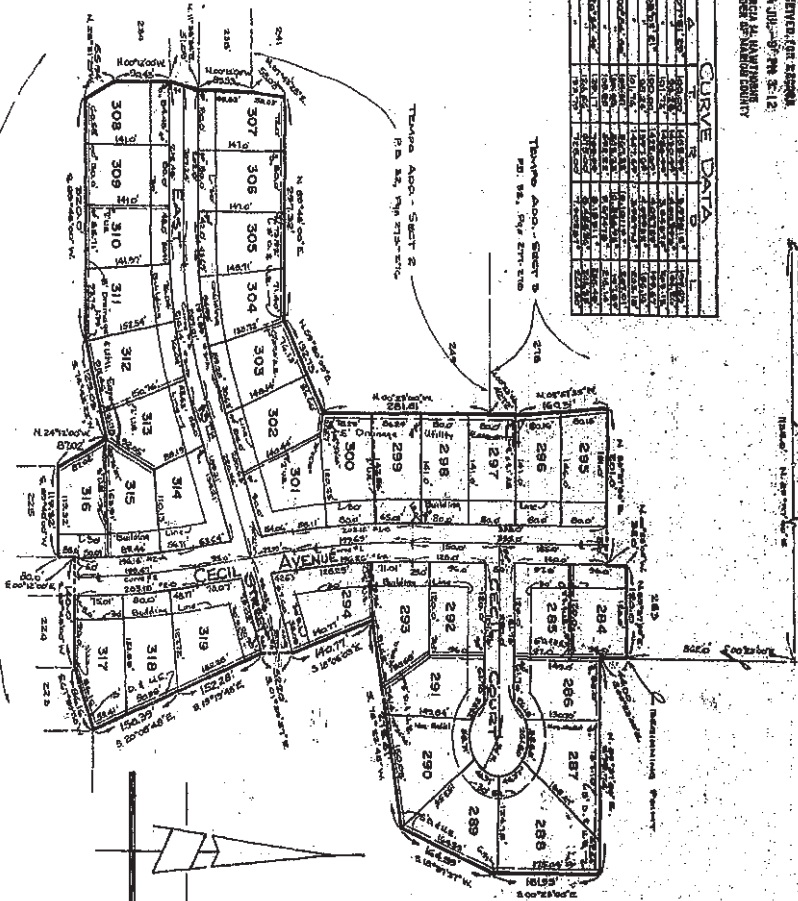


CURVE DATA

Station	Chord Length	Chord Bearing	Chord Azimuth	Central Angle	Central Azimuth	Central Bearing
1+00.00	25.00	N 10° 00' 00" E	10° 00' 00"	120° 00' 00"	110° 00' 00"	100° 00' 00"
2+00.00	25.00	N 20° 00' 00" E	20° 00' 00"	120° 00' 00"	110° 00' 00"	100° 00' 00"
3+00.00	25.00	N 30° 00' 00" E	30° 00' 00"	120° 00' 00"	110° 00' 00"	100° 00' 00"
4+00.00	25.00	N 40° 00' 00" E	40° 00' 00"	120° 00' 00"	110° 00' 00"	100° 00' 00"
5+00.00	25.00	N 50° 00' 00" E	50° 00' 00"	120° 00' 00"	110° 00' 00"	100° 00' 00"
6+00.00	25.00	N 60° 00' 00" E	60° 00' 00"	120° 00' 00"	110° 00' 00"	100° 00' 00"
7+00.00	25.00	N 70° 00' 00" E	70° 00' 00"	120° 00' 00"	110° 00' 00"	100° 00' 00"
8+00.00	25.00	N 80° 00' 00" E	80° 00' 00"	120° 00' 00"	110° 00' 00"	100° 00' 00"
9+00.00	25.00	N 90° 00' 00" E	90° 00' 00"	120° 00' 00"	110° 00' 00"	100° 00' 00"
10+00.00	25.00	N 00° 00' 00" E	00° 00' 00"	120° 00' 00"	110° 00' 00"	100° 00' 00"



64-33640

TEMPO ADDITION - SECTION FOUR

I hereby certify that the within plat is true and correct and represents a survey of a part of the Southwest Quarter of Section 31, Township 16 North, Range 13 East, Green County, Indiana, being more particularly described as follows: To wit:

Commencing at the Northwest Corner of the above described section, the same being the intersection of the Northwest Quarter of Section 31, Township 16 North, Range 13 East, Green County, Indiana, being more particularly described as follows:

1. Beginning at the Northwest Corner of the above described section, the same being the intersection of the Northwest Quarter of Section 31, Township 16 North, Range 13 East, Green County, Indiana, being more particularly described as follows:

2. ...

3. ...

4. ...

5. ...

6. ...

7. ...

8. ...

9. ...

10. ...

11. ...

12. ...

13. ...

14. ...

15. ...

16. ...

17. ...

18. ...

19. ...

20. ...

21. ...

22. ...

23. ...

24. ...

25. ...

26. ...

27. ...

28. ...

29. ...

30. ...

31. ...

32. ...

33. ...

34. ...

35. ...

36. ...

This plat was made by me during the month of June, 1962.
 Witness my signature this 10th day of July, 1962.

 Registered Land Surveyor No. 2020

- A. The streets shown and not herebefore dedicated are hereby dedicated to the public for its use.
- B. Point and side buildings, lines and easements shown on this plat hereby indicate the location of the same and the owner of the same shall be responsible for their maintenance and repair.
- C. The streets shown and not herebefore dedicated are hereby dedicated to the public for its use.
- D. The streets shown and not herebefore dedicated are hereby dedicated to the public for its use.
- E. The streets shown and not herebefore dedicated are hereby dedicated to the public for its use.
- F. The streets shown and not herebefore dedicated are hereby dedicated to the public for its use.
- G. The streets shown and not herebefore dedicated are hereby dedicated to the public for its use.
- H. The streets shown and not herebefore dedicated are hereby dedicated to the public for its use.
- I. The streets shown and not herebefore dedicated are hereby dedicated to the public for its use.
- J. The streets shown and not herebefore dedicated are hereby dedicated to the public for its use.
- K. The streets shown and not herebefore dedicated are hereby dedicated to the public for its use.
- L. The streets shown and not herebefore dedicated are hereby dedicated to the public for its use.
- M. The streets shown and not herebefore dedicated are hereby dedicated to the public for its use.
- N. The streets shown and not herebefore dedicated are hereby dedicated to the public for its use.
- O. The streets shown and not herebefore dedicated are hereby dedicated to the public for its use.
- P. The streets shown and not herebefore dedicated are hereby dedicated to the public for its use.
- Q. The streets shown and not herebefore dedicated are hereby dedicated to the public for its use.
- R. The streets shown and not herebefore dedicated are hereby dedicated to the public for its use.
- S. The streets shown and not herebefore dedicated are hereby dedicated to the public for its use.
- T. The streets shown and not herebefore dedicated are hereby dedicated to the public for its use.
- U. The streets shown and not herebefore dedicated are hereby dedicated to the public for its use.
- V. The streets shown and not herebefore dedicated are hereby dedicated to the public for its use.
- W. The streets shown and not herebefore dedicated are hereby dedicated to the public for its use.
- X. The streets shown and not herebefore dedicated are hereby dedicated to the public for its use.
- Y. The streets shown and not herebefore dedicated are hereby dedicated to the public for its use.
- Z. The streets shown and not herebefore dedicated are hereby dedicated to the public for its use.

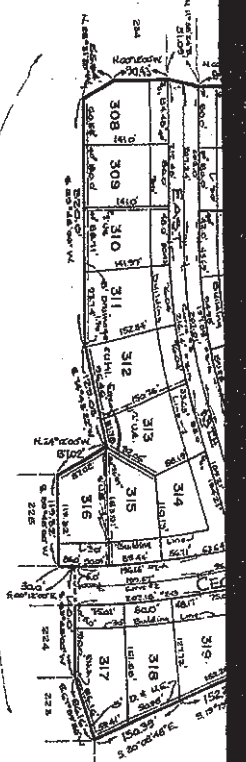
6433640

The undersigned, THOMAS HONER, by Fredrick T. Piattendorf, Agent, and Samuel S. Hancock and Hans Greese Hancock, husband and wife do hereby lay off this plat and subdivision. The subdivision shall be known and designated as TEMPO ADDITION - SECTION FOUR, an addition in Marion County, Indiana.

Witness my hand and seal this 10th day of July, 1962.

STATE OF INDIANA,
 COUNTY OF MARION





TEMPO ADD - SECTION ONE

TEMPO ADDITION - SECTION FOUR

This subdivision consists of 10 lots numbered 318 through 327 inclusive. The lots are shown on this plan in the same manner as they are shown on the plan in the original subdivision. This survey was made by me during the month of June, 1967. Witness my signature this 1st day of July, 1967.

John R. ...
 Surveyor
 State of Indiana

The undersigned, being the legal estate owner in the above plat and description, do hereby certify that the above plat and description of the subdivision is a true and correct copy of the original plat and description of the subdivision as the same appears on the records of the office of the County Clerk of Marion County, Indiana.

- A. The streets shown on this plat are hereby dedicated to the public for its use.
- B. The streets shown on this plat are hereby dedicated to the public for its use.
- C. The streets shown on this plat are hereby dedicated to the public for its use.
- D. The streets shown on this plat are hereby dedicated to the public for its use.
- E. The streets shown on this plat are hereby dedicated to the public for its use.
- F. The streets shown on this plat are hereby dedicated to the public for its use.
- G. The streets shown on this plat are hereby dedicated to the public for its use.
- H. The streets shown on this plat are hereby dedicated to the public for its use.
- I. The streets shown on this plat are hereby dedicated to the public for its use.

STATE OF INDIANA
 COUNTY OF MARION

James S. Dunnett
 Secretary

John R. ...
 Surveyor

Robert R. ...
 Robert R. ...

James S. Dunnett
 Secretary

John R. ...
 Surveyor

This instrument prepared by Paul I. Cripe, Inc., by James S. Dunnett, Secretary, this 1st day of July, 1967.

FINAL APPROVAL
 BEFORE 5-6-68



04364 / 49

64-33640