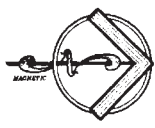


As-built Plat
The Villas at Thompson Place
 As-built #5 / Buildings #16 & 17
 Part of the Northwest 1/4, Section 1, Township 14 North, Range 3 East
 City of Indianapolis, Perry Township, Marion County, Indiana

990064901

108130006



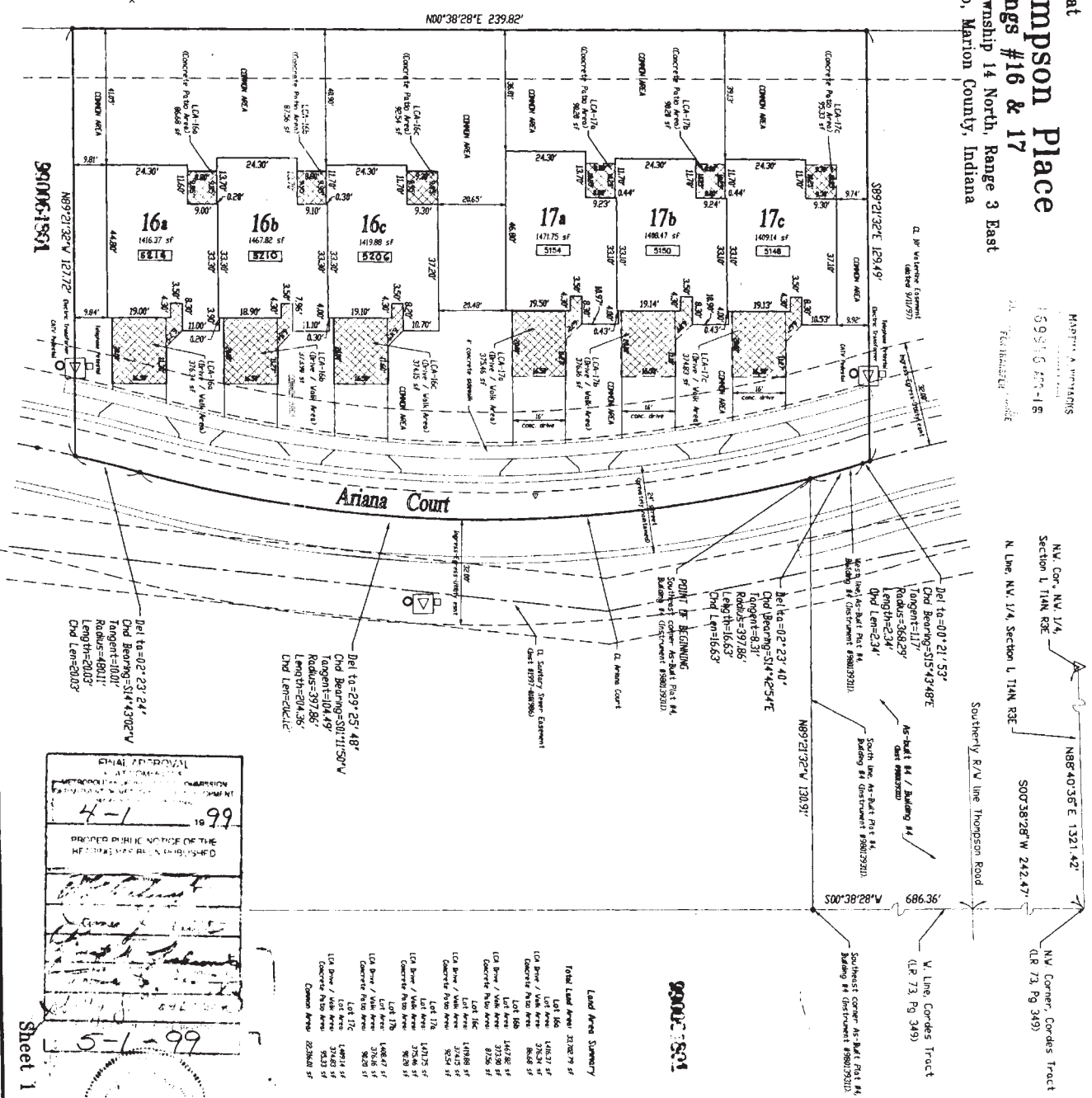
As-built #5 / Buildings #16 & 17
 33702.79 sf
 0.7773 ac

Comments may be in a separate column with other comments.
 Lots were determined by taking the as-built location of the
 buildings and extending the lot to the nearest corner from
 the point of the building.

Legend

- LA Lot Number
- Lot Area in Square Feet
- 2.335 acres
- Lot Area in Acres
- U.E. Utility Easement
- D.E. Drainage Easement
- Impervious-surface, Substandard
- Impervious-surface, Standard
- ISA. Street Address
- ISA. Street Address
- USA. United Common Area

This instrument prepared by
Pendleton Consulting
 Pendleton, Indiana 46064-0087
 Phone/Fax (317) 994-4444



FINAL APPROVAL
 4-1 99
 PRINTED PUBLIC NOTICE OF THE
 RETURN MAY BE OBTAINED FROM
 [Signature]
 [Signature]
 [Signature]
 5-1-99



Sheet 1 of 2

Lot Area Summary

Lot #	Lot Area	Lot #	Lot Area
Lot 16a	1416.27 sf	Lot 17a	1471.75 sf
Lot 16b	1467.82 sf	Lot 17b	1486.47 sf
Lot 16c	1419.88 sf	Lot 17c	1469.14 sf
Lot 17a	1471.75 sf	Lot 17b	1486.47 sf
Lot 17b	1486.47 sf	Lot 17c	1469.14 sf
Lot 17c	1469.14 sf		

MARION COUNTY RECORDS
 15521667-18
 FILED 04/11/99

N.W. Corner, NW 1/4,
 Section 1, T14N R3E
 N. Line, NW 1/4, Section 1, T14N R3E

N88°40'36" E 1321.42'
 S00°38'28" W 242.47'
 N.W. Corner, Cordes Tract
 (P. 73, Pg. 349)

Del to=02°23'44"
 Chd Bearing=S14°43'02"W
 Tangent=180.11'
 Radius=480.11'
 Length=200.3'
 Chd Len=200.3'

Del to=29°35'48"
 Chd Bearing=S07°11'30"W
 Tangent=104.49'
 Radius=397.86'
 Length=204.36'
 Chd Len=204.36'

Del to=02°23'40"
 Chd Bearing=S14°42'54"E
 Tangent=8.31'
 Radius=397.86'
 Length=16.63'
 Chd Len=16.63'

Del to=02°21'53"
 Chd Bearing=S15°43'48"E
 Tangent=117'
 Radius=368.29'
 Length=234'
 Chd Len=234'

Del to=02°21'53"
 Chd Bearing=S15°43'48"E
 Tangent=117'
 Radius=368.29'
 Length=234'
 Chd Len=234'

(29)

**DECLARATION OF COVENANTS AND RESTRICTIONS
FOR THE VILLAS AT THOMPSON PLACE**

TABLE OF CONTENTS

	Page
1. Definitions	3
2. Declaration	5
3. Description of The Villas at Thompson Place, Section 1	5
4. Lots and Easements	5
5. Common Area	5
6. Ownership of Common Area	5
7. Delegation of Use of the Common Area	6
8. Encroachments and Easements In Common Area	6
9. Sidewalks and Driveways	6
10. Easement for Utilities and Public and Quasi Public Vehicles	6
11. Corporation; Membership Voting; Functions	6
(a) Membership in Corporation	7
(b) Classes and Voting Rights	7
(c) Functions	7
12. Board of Directors	7
(a) Management	7
(b) Initial Board of Directors	8
(c) Duties of the Board of Directors	8
(d) Powers of the Board of Directors	9
(e) Limitation on Board Action	10
(f) Compensation	10
(g) Non-Liability of Directors	10
(h) Bond	10
13. Initial Management	11
14. Real Estate Taxes	11
15. Utilities	11
16. Maintenance, Repairs and Replacements	11
17. Architectural Control	12
(a) The Architectural Review Board	12
(b) Purposes	12
(c) Conditions	12
(d) Procedures	13
(e) Maintenance of Architectural Control	13
18. Property Rights	13
(a) General	13
(b) Right of Enjoyment	14
(c) Association's Rights and Obligations	14
(d) Declarant's Rights	14
(e) Private Streets	15
19. Assessments	15
(a) Annual Accounting	15
(b) Proposed Annual Budget	15
(c) Regular Assessments	16
(d) Special Assessments	16
(e) Regular Assessments Prior to the Applicable Date	16
(f) Failure of Owner to Pay Assessments	17
(g) Subordination of Assessment Lien to Mortgage	18

06/12/98 02:53PM JOAN N. ROHECIL MARION CTY RECORDER MEH 66.00 PAGES: 29

Inst # 1998-0099847