

To the City of Indianapolis Marion County Indiana.

2041.6
262.0
273.16
482.94
753.16

Being a delineation of that part of the east half of the south-east quarter Section 20, Township 15 North, Range 4 West, lying south of the center of Michigan Iron Mine Mission owned by Indiana.

Said Addition consists of 25 Lots numbered from 1 to 21 inclusive; also streets and parts of blocks as shown by Plat.

Dimensions and names of lots are given in feet and decimals of a foot.

Measurements are taken to the center of adjoining street or streets. All streets or parts of streets are hereby dedicated to the public.

In Witness whereof, we have hereunto set our hands and seals this 8th day of June 1909.

Charles A. Brown —
Sarah E. Brown —

State of Indiana } S.S.
Marion Co. }

Personally appeared before me a Notary Public in and for said County and State, Charles A. Brown and Sarah E. Brown his wife, who acknowledged the execution of the annexed Plat, to be their voluntary act and deed, this 8th day of June 1909.

Frank E. Brown (S.S.)
Notary Public.

My Commission expires Sept 5th 1911.

Approved } John M. Wendenhall.
Board of County } Geo. H. Roberts.
Commissioners } Carl Van Hatten.
June 10th 09.

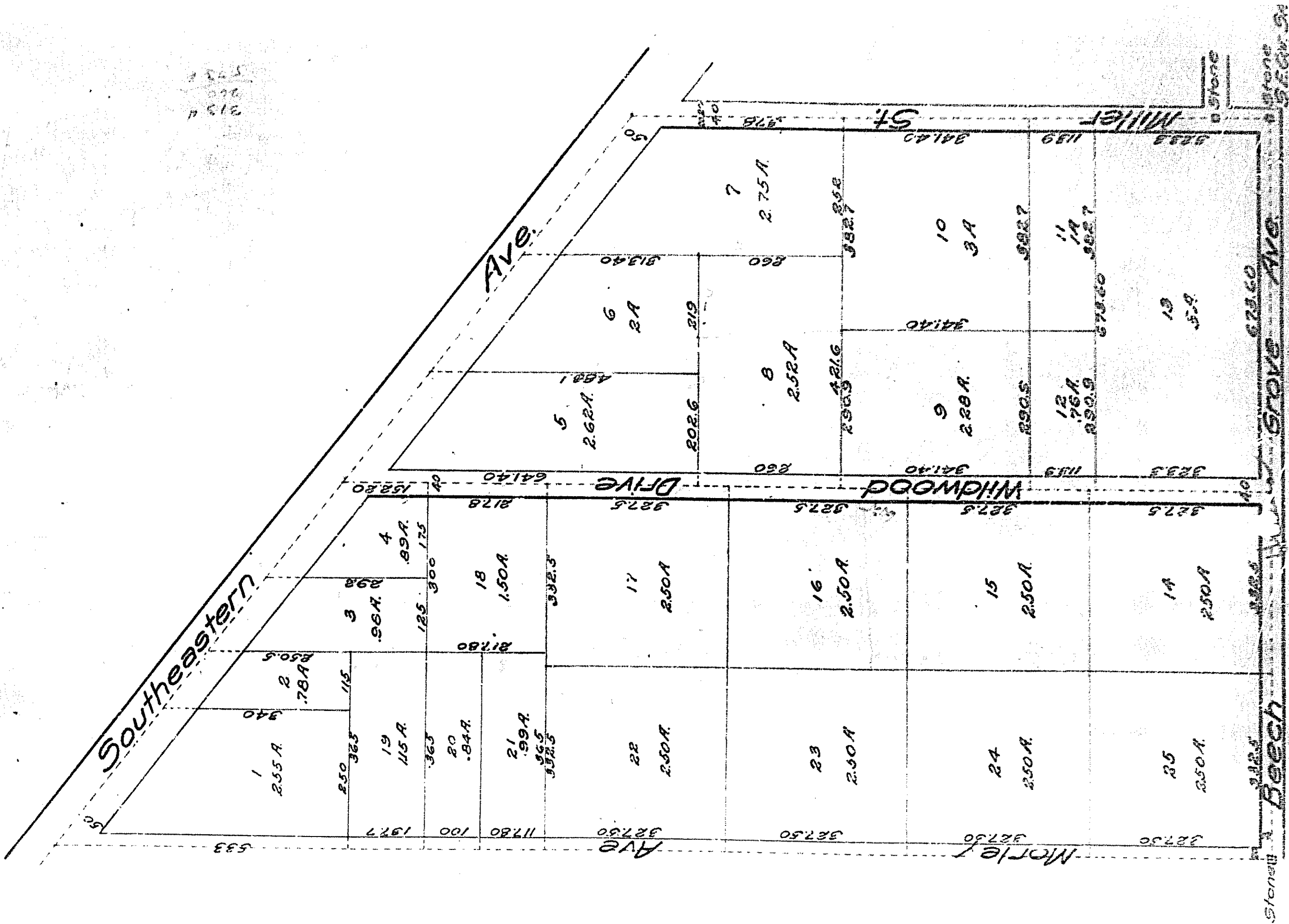
Approved June 8th 1909.

Paul Julian,
County Engineer.

Recorded June 10, 1909 at 10 O'clock A.M.

Harry R. Waller,
Recorder Marion County.

2 225
000
2134



Southeastern

Ave.

WOODWARD DRIVE

MILLER ST.

Stone Ave.

Stone

MORLEY

533

2.55A

1.78A

1.15

1.15A

.84A

1.99A

1.50A

2.50A

2.50A

2.50A

2.50A

2.50A

2.50A

2.50A

2.50A

2.50A

2.50A

2.50A

2.50A

2.50A

2.50A

1.99A

1.50A

2.50A

2.50A

2.50A

2.50A

2.50A

2.50A

2.50A

2.50A

2.50A

2.50A

2.50A

2.50A

2.50A

2.50A

2.50A

2.50A

2.50A

1.58A

1.40A

1.40A

1.40A

1.40A

1.40A

1.40A

1.40A

1.40A

1.40A

1.40A

1.40A

1.40A

1.40A

1.40A

1.40A

1.40A

1.40A

1.40A

1.40A

1.40A

1.40A

1.40A

1.40A

1.40A

1.40A

1.40A

1.40A

1.40A

1.40A

1.40A

1.40A

1.40A

1.40A

1.40A

1.40A

1.40A

1.40A

1.40A

1.40A

1.40A

1.40A

1.40A

1.40A

1.40A

1.40A

1.40A

1.40A

1.40A

1.40A

1.40A

1.40A

1.40A

1.40A

1.40A

1.40A

1.40A

1.40A

1.40A

1.40A

1.40A

1.40A

1.40A

1.40A

1.40A

1.40A

1.40A

1.40A

1.40A

1.40A

1.40A

1.40A

1.40A

1.40A

1.40A

1.40A

1.40A

1.40A

1.40A

1.40A

1.40A

1.40A

1.40A

1.40A

1.40A

1.40A

1.40A

1.40A

1.40A

1.40A

1.40A

1.40A

1.40A

1.40A

1.40A

1.40A

1.40A

1.40A

1.40A

1.40A

1.40A

1.40A

1.40A

1.40A

1.40A

1.40A

1.40A

1.40A

1.40A

1.40A

1.40A

1.40A

1.40A

1.40A

1.40A

1.40A

1.40A

1.40A

1.40A

1.40A

1.40A

1.40A

1.40A

1.40A

1.40A

1.40A

1.40A

1.40A

1.40A

1.40A

1.40A

1.40A

1.40A

1.40A

1.40A

1.40A

1.40A

1.40A

1.40A

1.40A

1.40A

1.40A

1.40A

1.40A

1.40A

1.40A

1.40A

1.40A

1.40A

1.40A

1.40A

1.40A

1.40A

1.40A

1.40A

1.40A

1.40A

1.40A

1.40A

1.40A

1.40A

1.40A

1.40A

1.40A

1.40A

1.40A

1.40A

1.40A

1.40A

1.40A

1.40A

1.40A

1.40A

1.40A

1.40A

1.40A

1.40A

1.40A

1.40A

1.40A

1.40A

1.40A

1.40A

1.40A

1.40A

1.40A

1.40A

1.40A

1.40A

1.40A